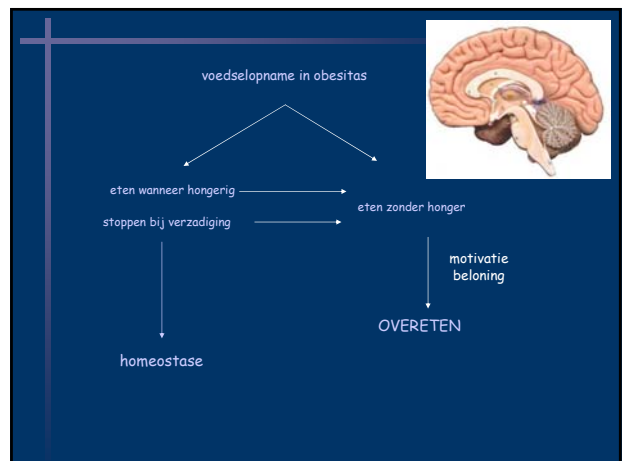
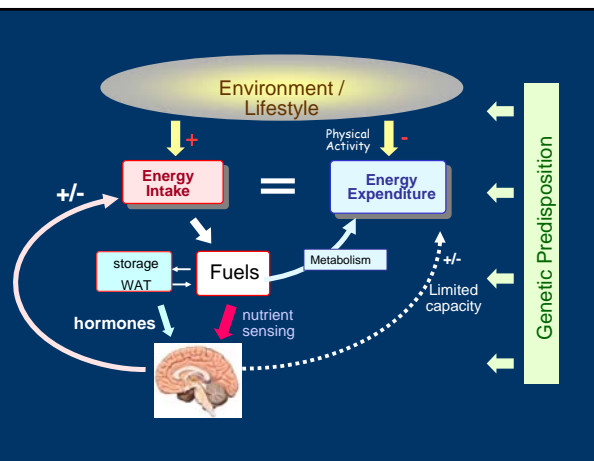
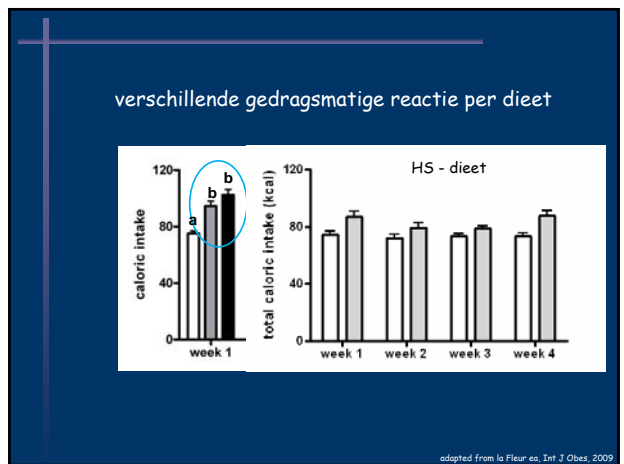
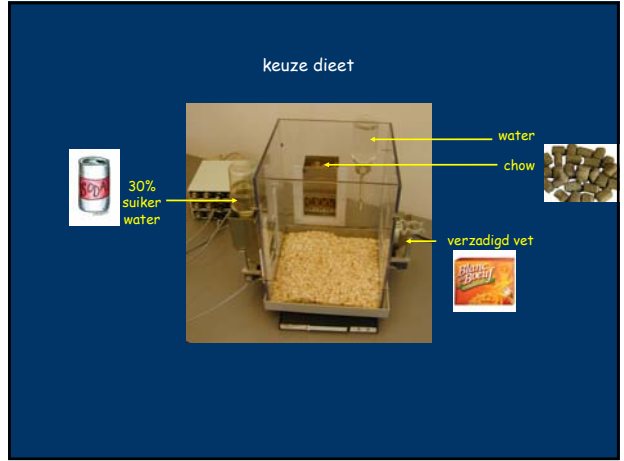


De rol van het brein in de ontwikkeling van Obesitas

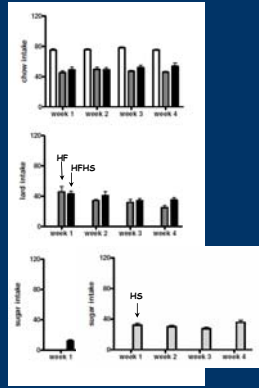
Susanne la Fleur





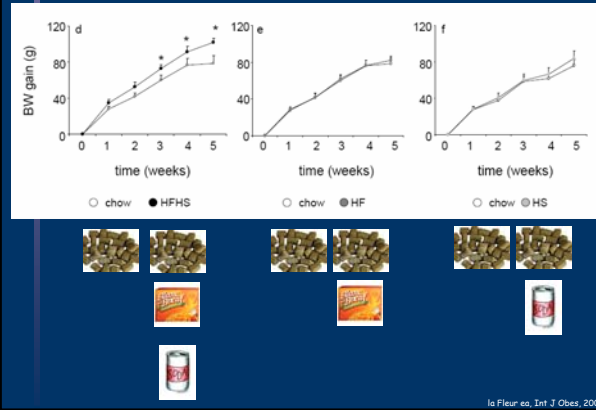
adapted from la Fleur et al. Int. J. Obes. 2009

waar komen de calorieën vandaan?



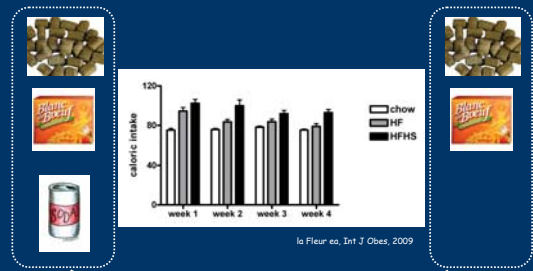
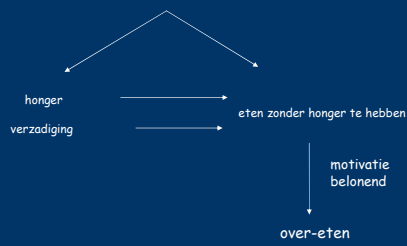
adapted from la Fleur et al., Int J Obes, 2009.

alleen een HFHS-dieet leidt tot gewichtsververmeerdering



la Fleur et al., Int J Obes, 2009.

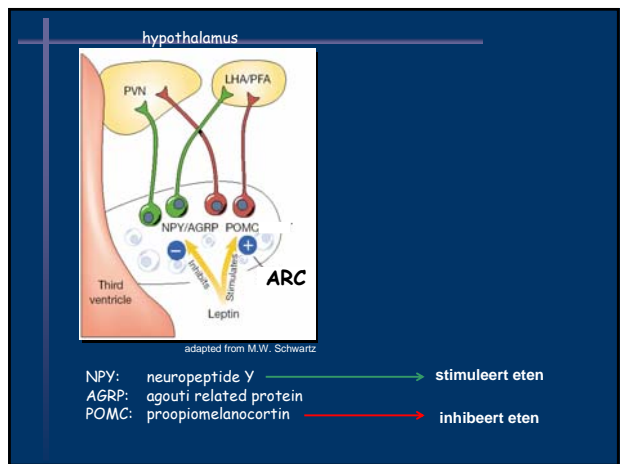
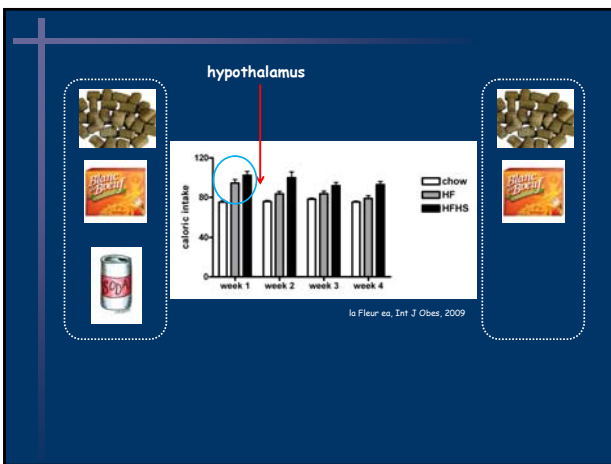
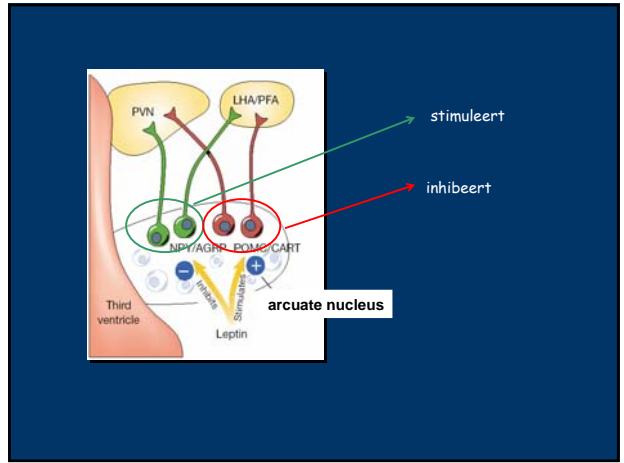
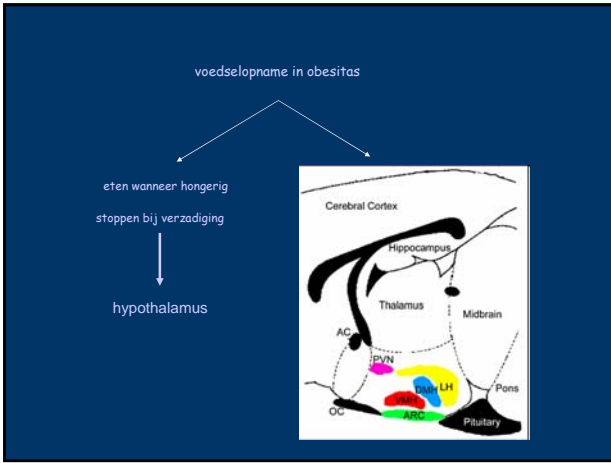
regulatie van eetgedrag

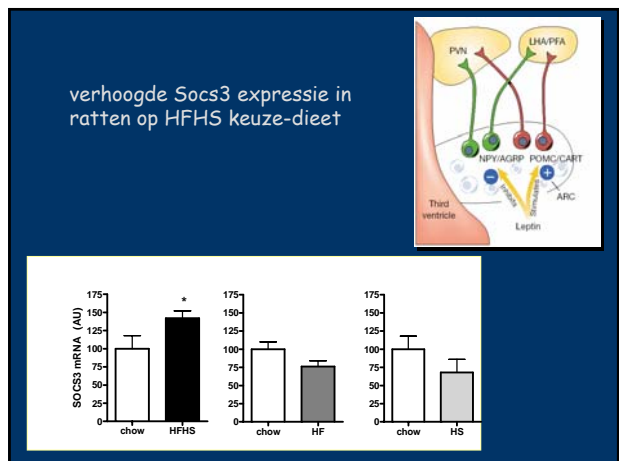
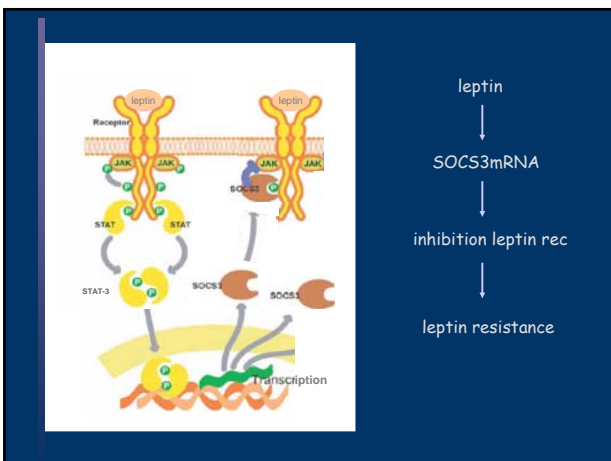
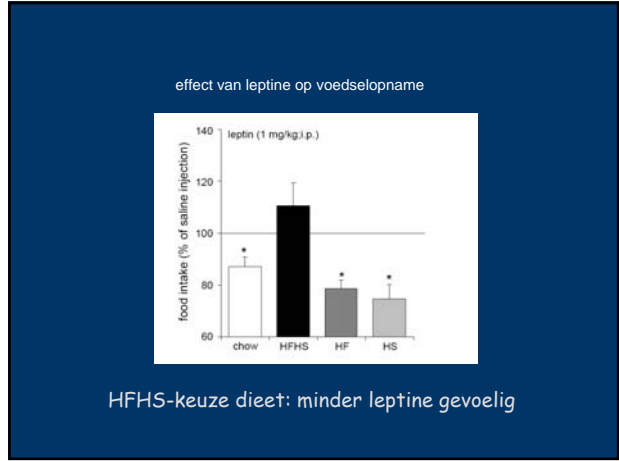
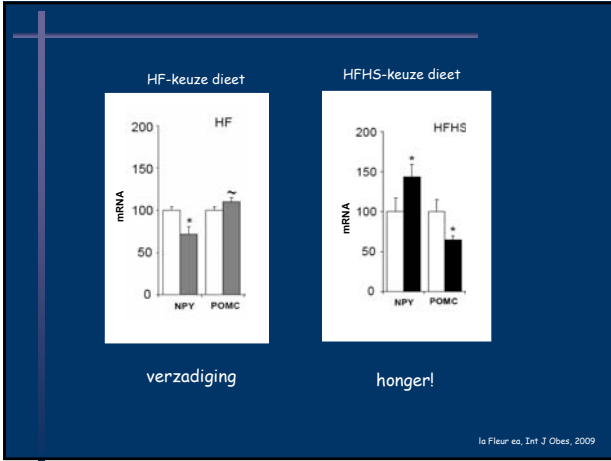


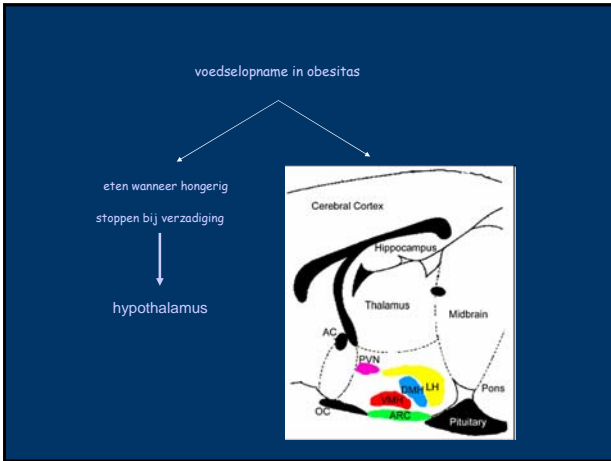
la Fleur et al., Int J Obes, 2009.

overeten

passen eetgedrag aan (homeostase)

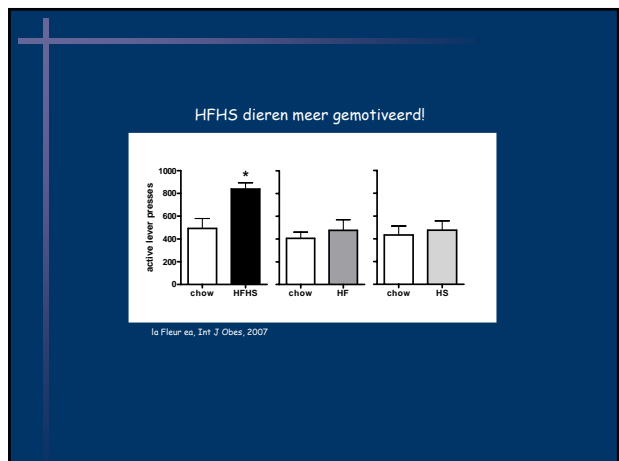


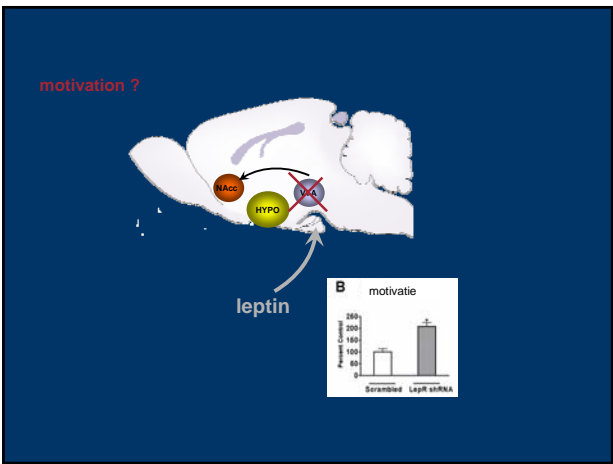
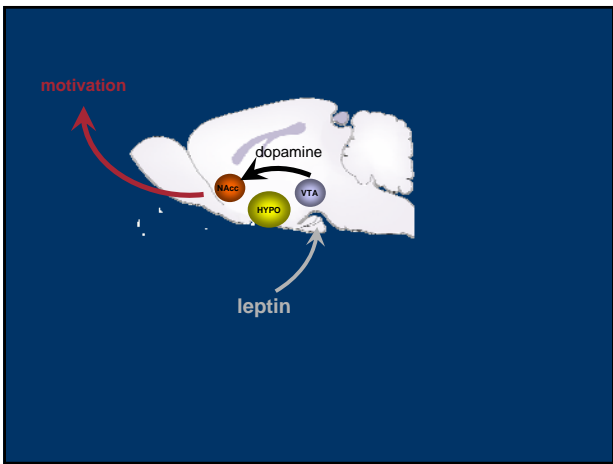
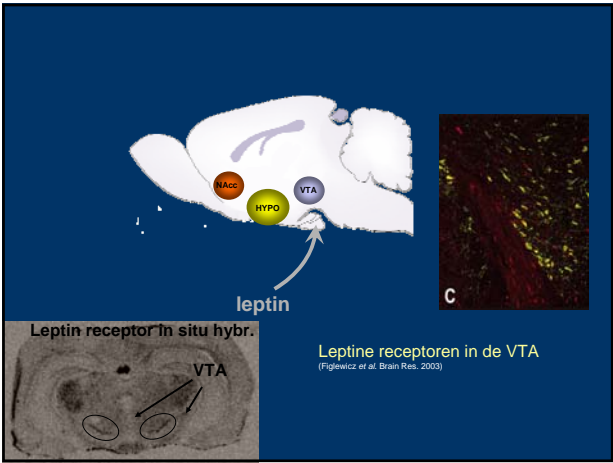
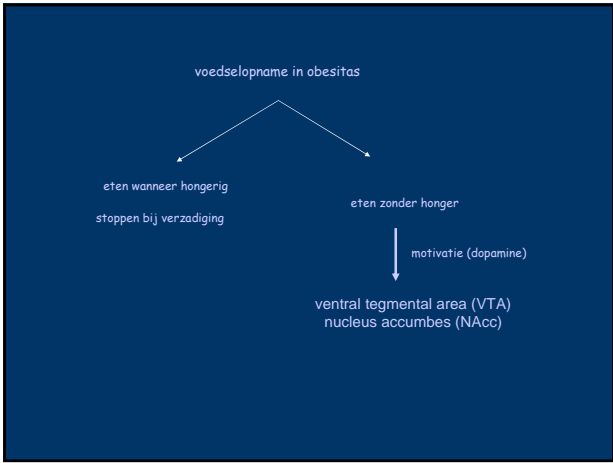


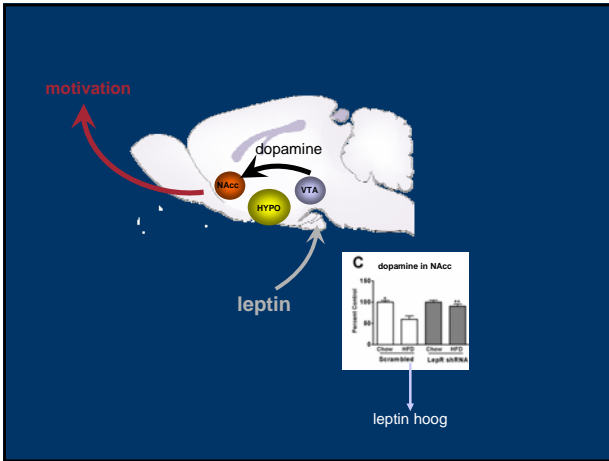


het meten van motivatie bij de rat
voor iedere beloning moet de rat harder werken

→ hoeveelheid pedaaldrukken mate voor motivatie





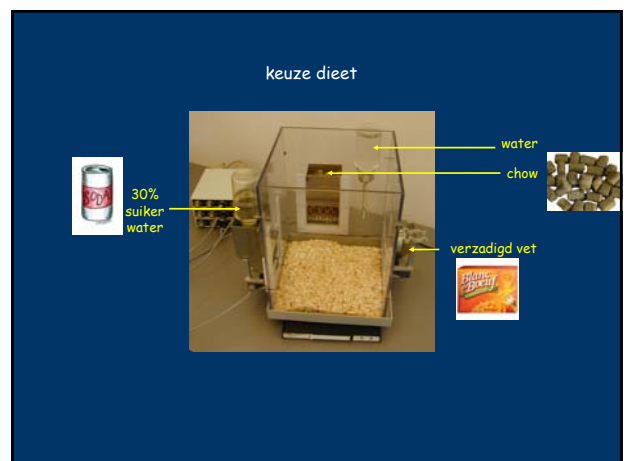


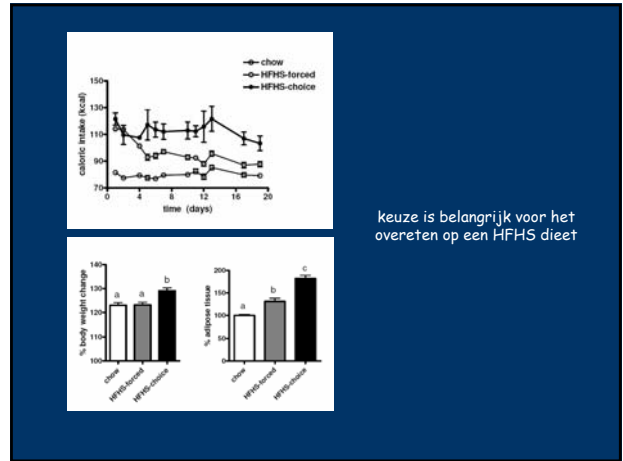
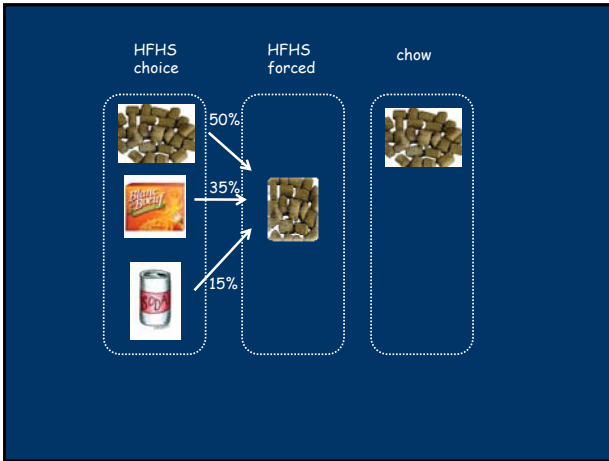
conclusie

ratten op een HFHS keuze dieet zijn leptine resistent

zowel in de arcuate nucleus (honger/verzadiging)

als hoogst waarschijnlijk in de VTA (motivatie)





met dank aan

Afd. Endocrinologie & Metabolisme
 Charlene Diepenbroek
 Leslie Eggels
 Gent-Jan Geerse
 José van den Heuvel
 Karin Koopmans

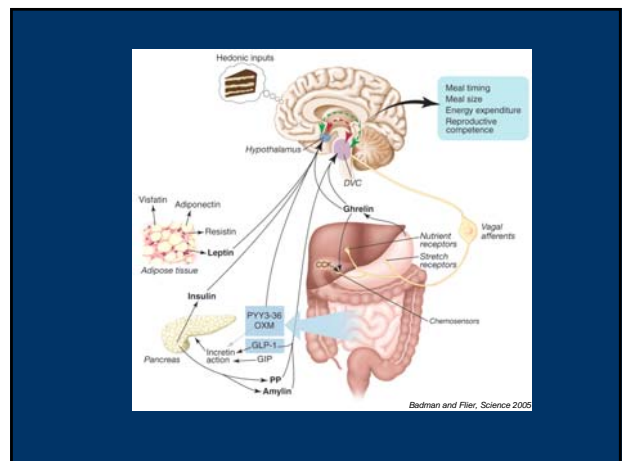
Mireille Serlie
 Eric Fliers
 Dries Kalsbeek
 Mariette Ackermans
 Erik Endert

Afd. Neurowetenschappen & Farmacologie
 Roger Adan




Esther van der Zwaal
 Rea van Rozen
 Mieneke Luijendijk
 Maike Brans
 Louk Vanderschuren

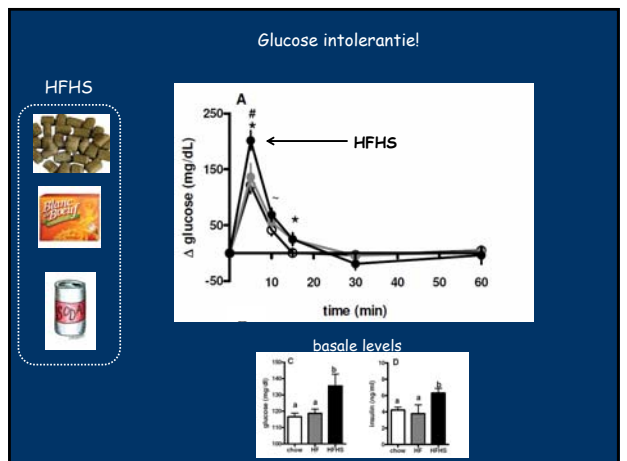
Marijke de Backer (Sanquin)
 Gitte Tiesjema (RIVM)

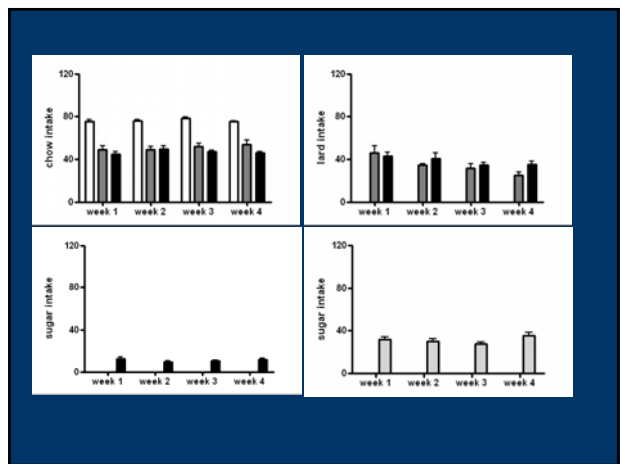
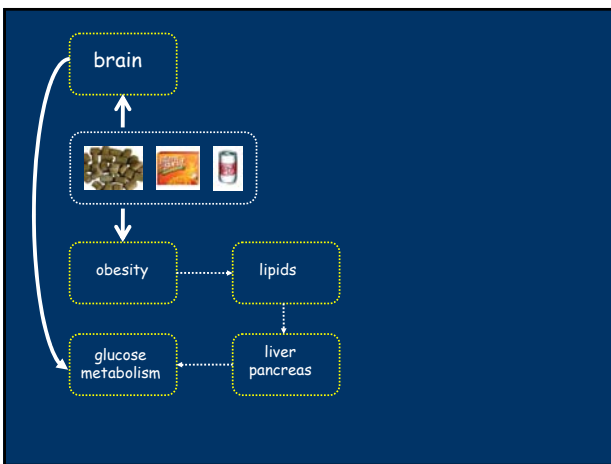
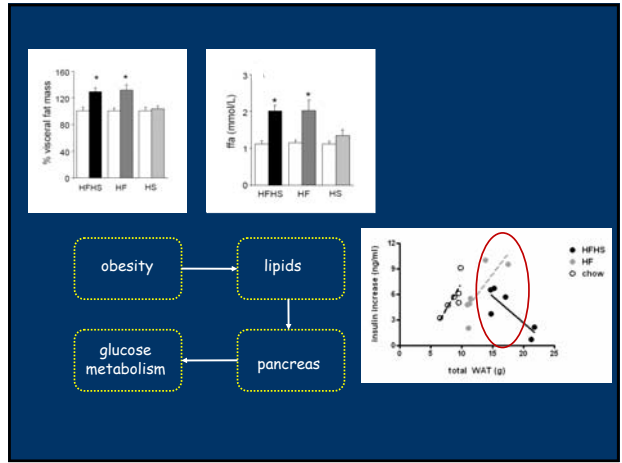
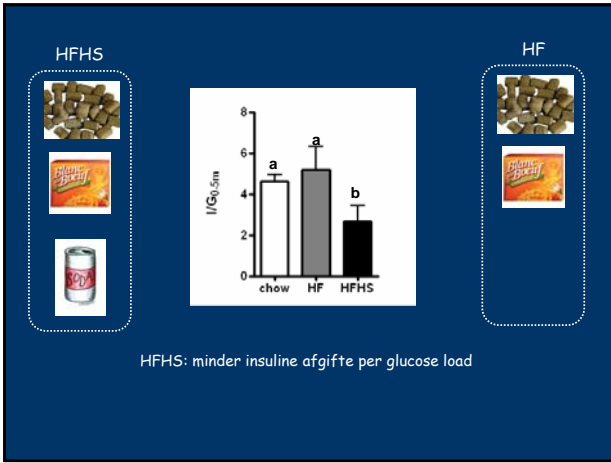
supported by

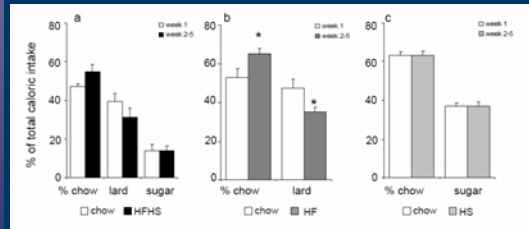
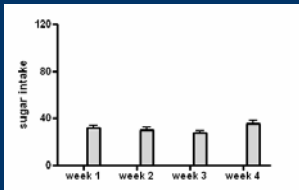
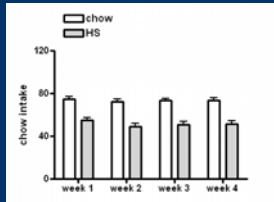




		
HFHS-keuze dieet	HF-keuze dieet	HS-keuze dieet
overeten snel obees	tijdelijk overeten snel obees	licht overeten later obees
glucose intolerant (1 week) verminderde insuline respons (4 weken)	normale glucose tolerantie	normale glucose tolerantie (hyperinsulinemia)







alle dieeten leiden tot obesitas

