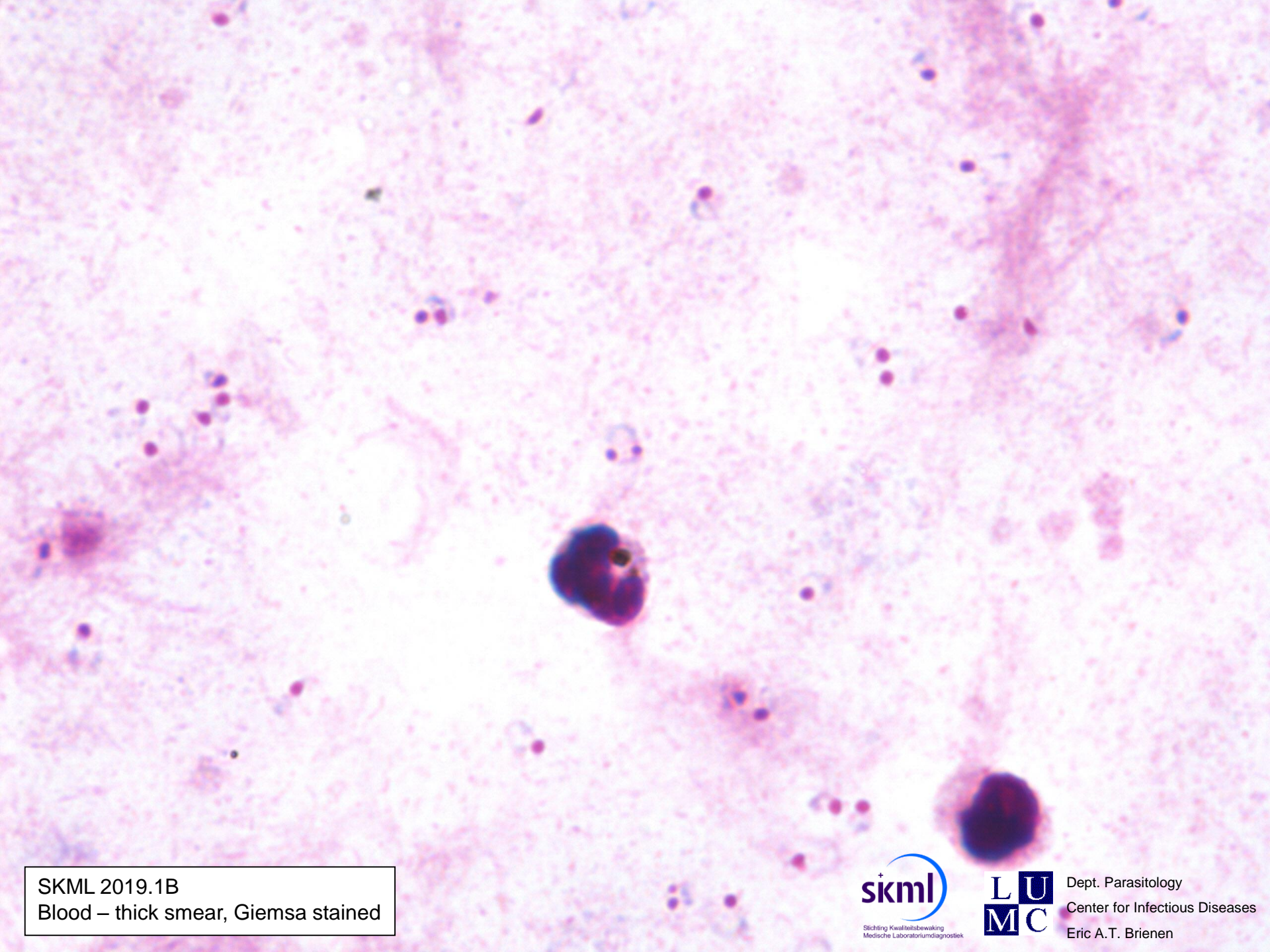
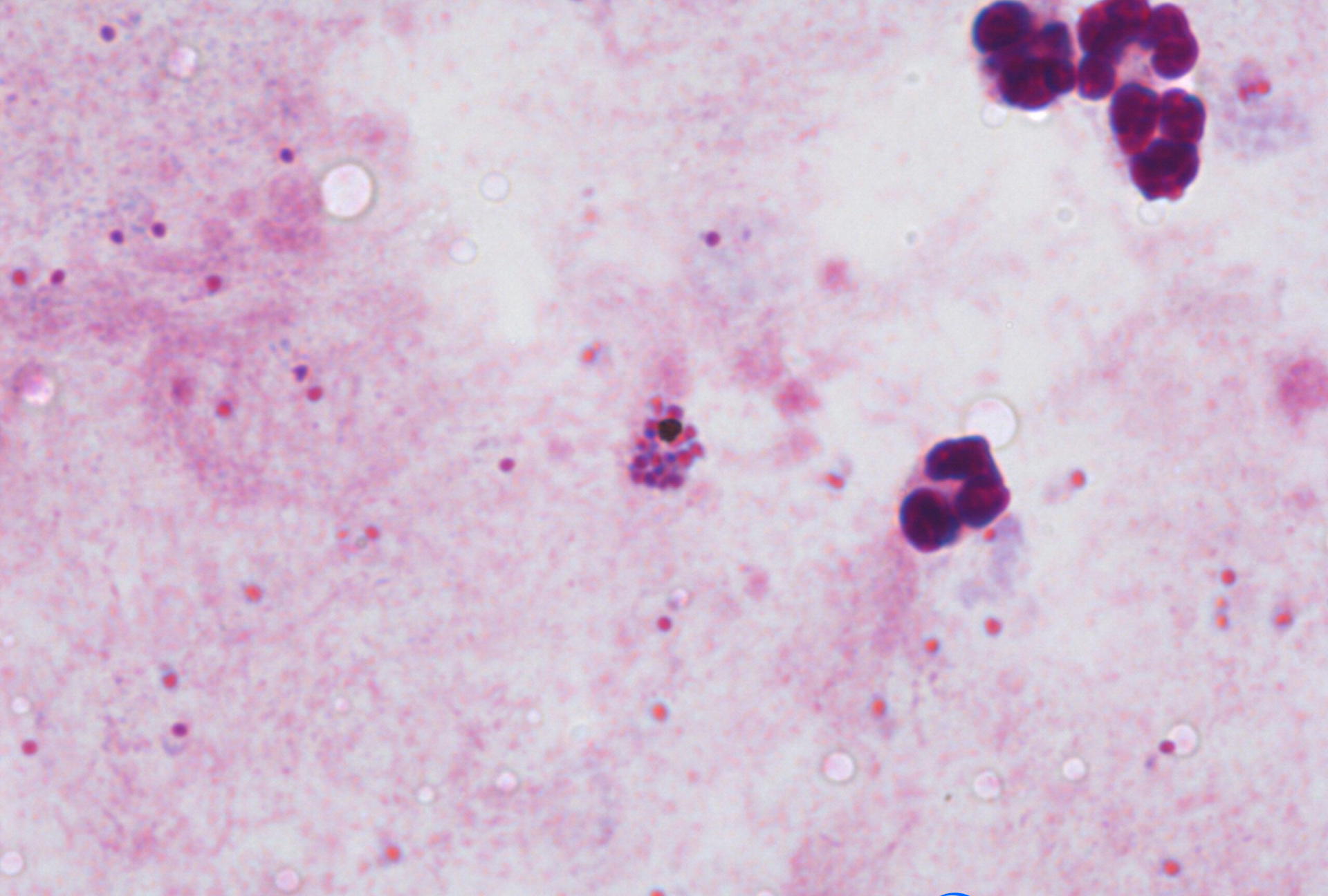


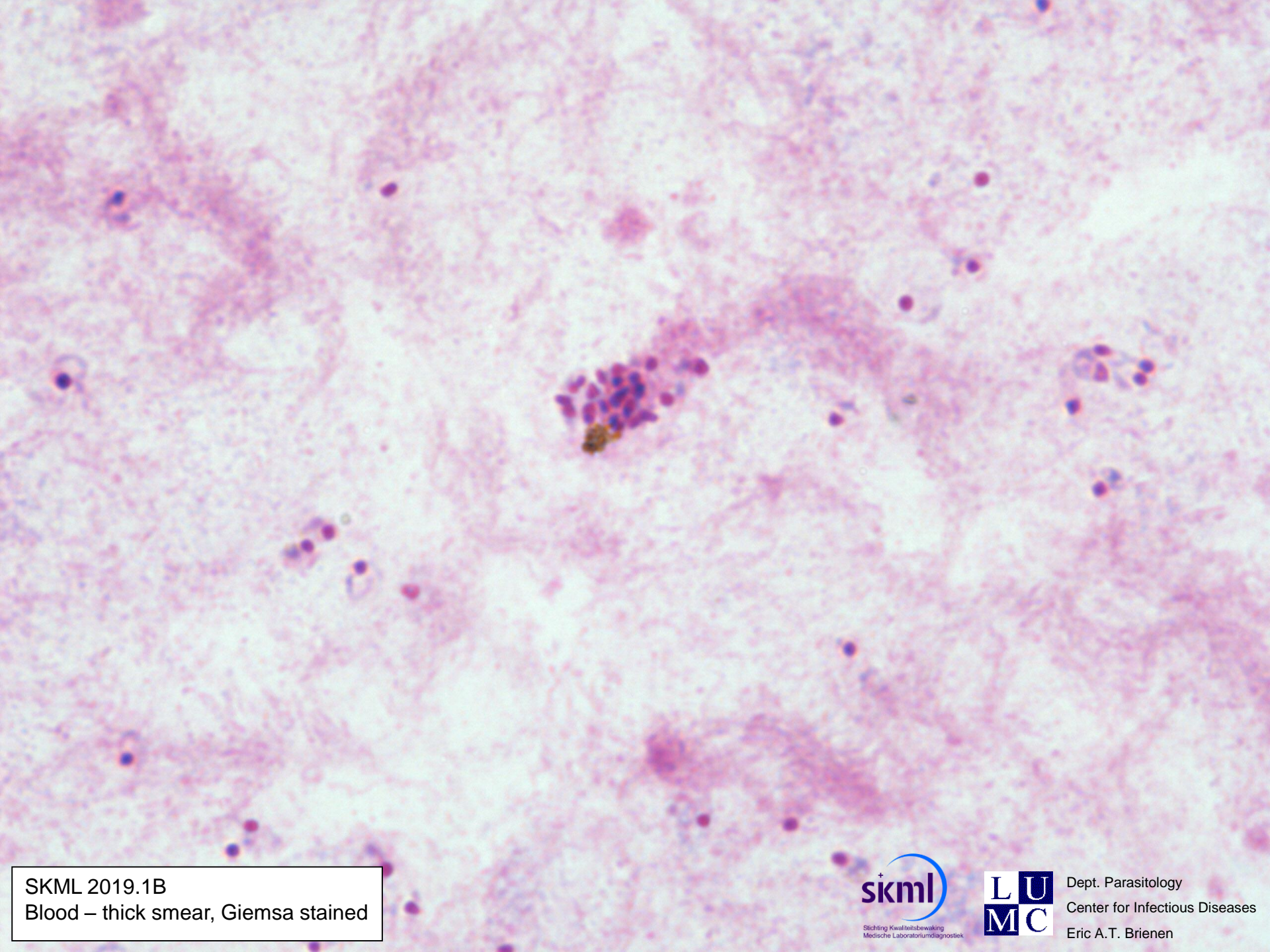
SKML 2019.1A
Blood – thin smear, Giemsa stained



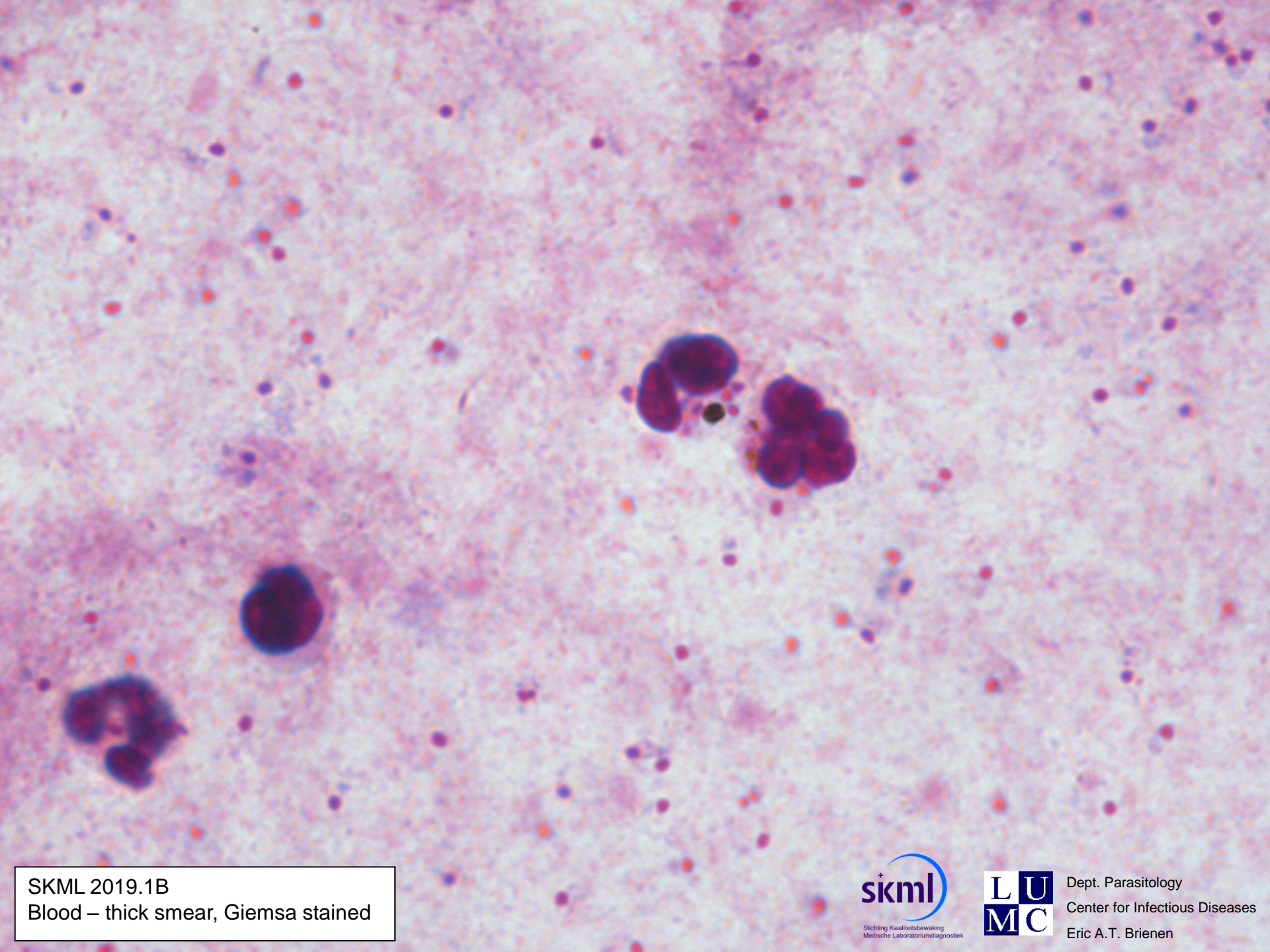
SKML 2019.1B
Blood – thick smear, Giemsa stained



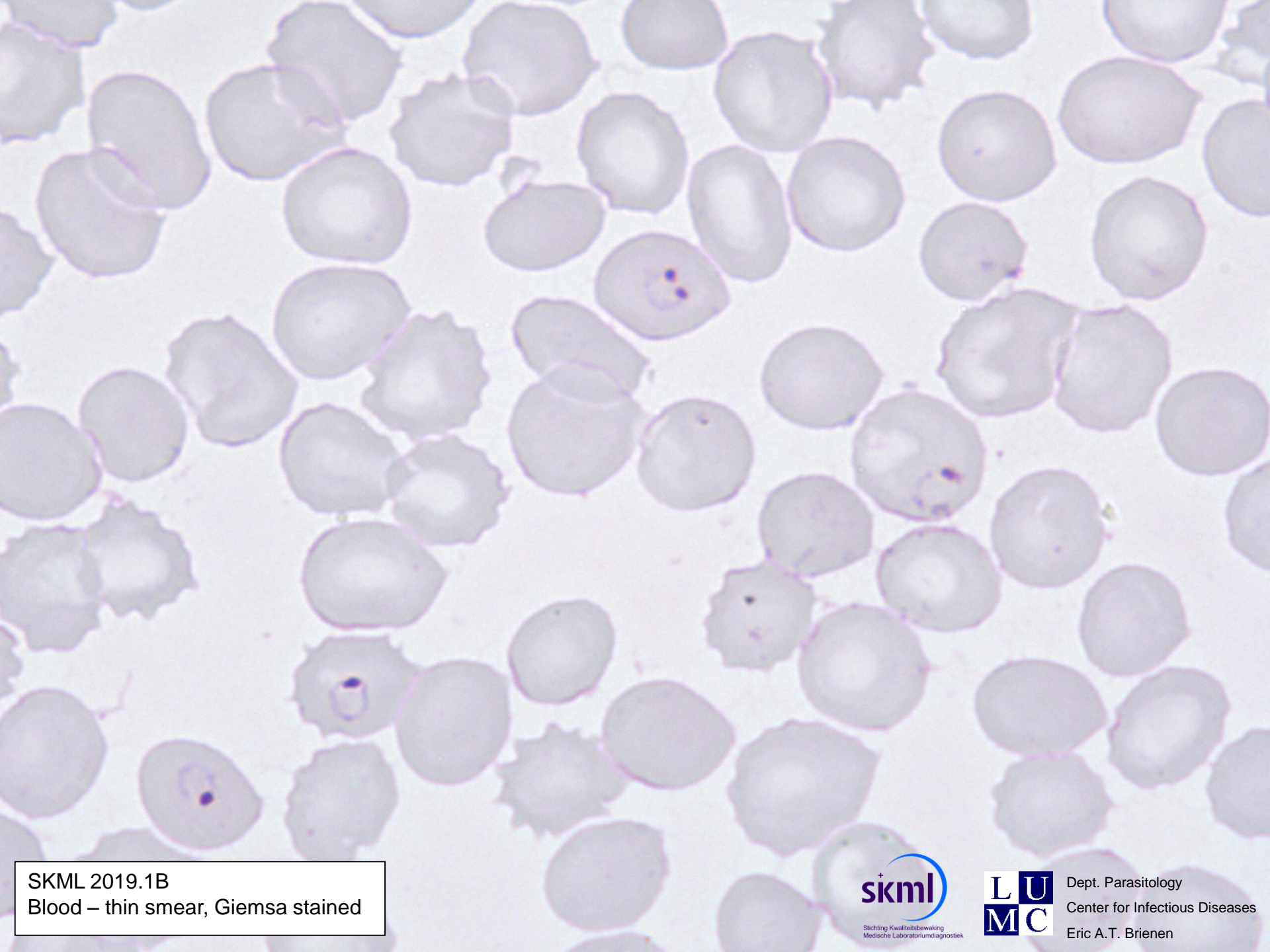
SKML 2019.1B
Blood – thick smear, Giemsa stained



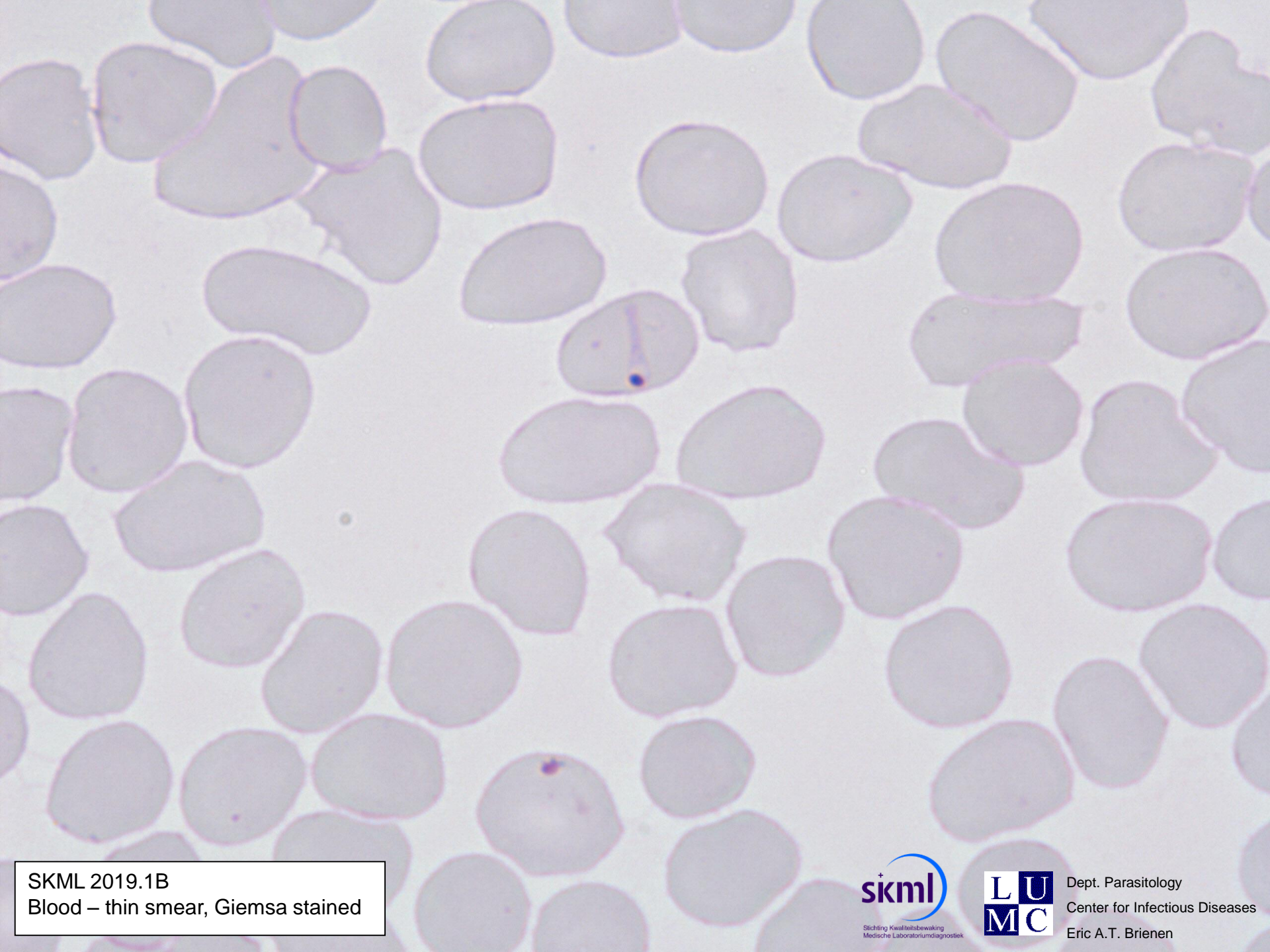
SKML 2019.1B
Blood – thick smear, Giemsa stained



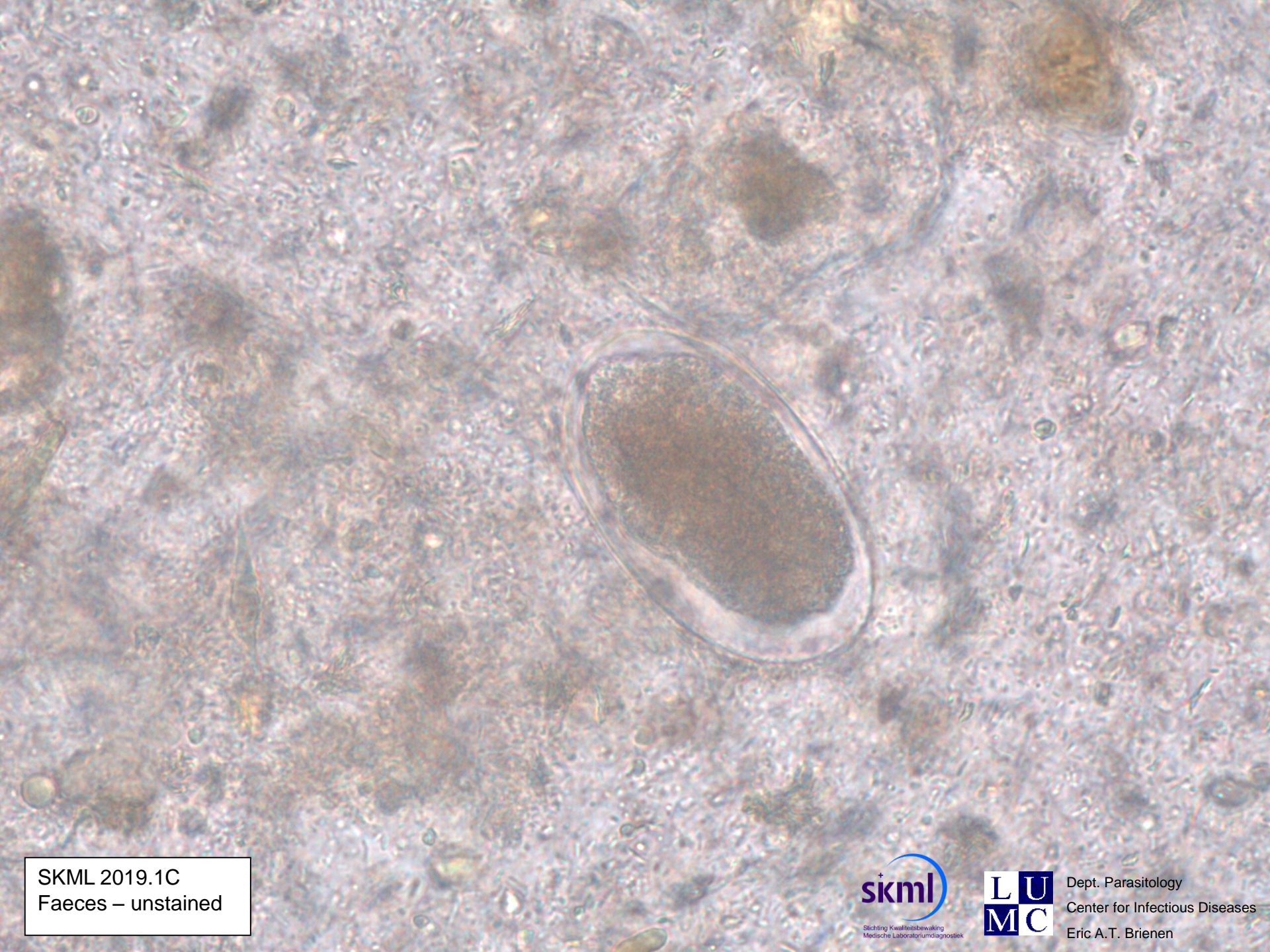
SKML 2019.1B
Blood – thick smear, Giemsa stained



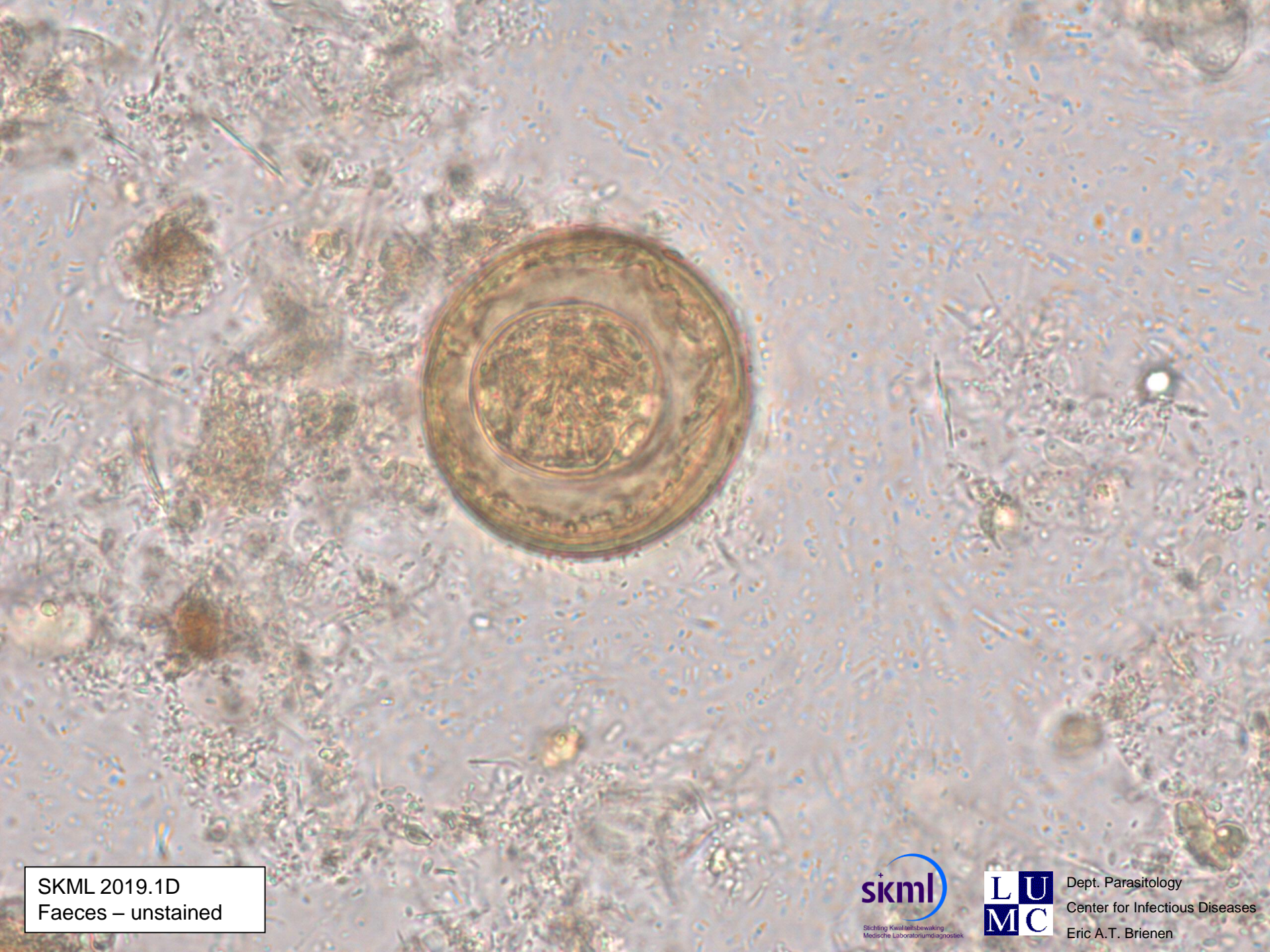
SKML 2019.1B
Blood – thin smear, Giemsa stained



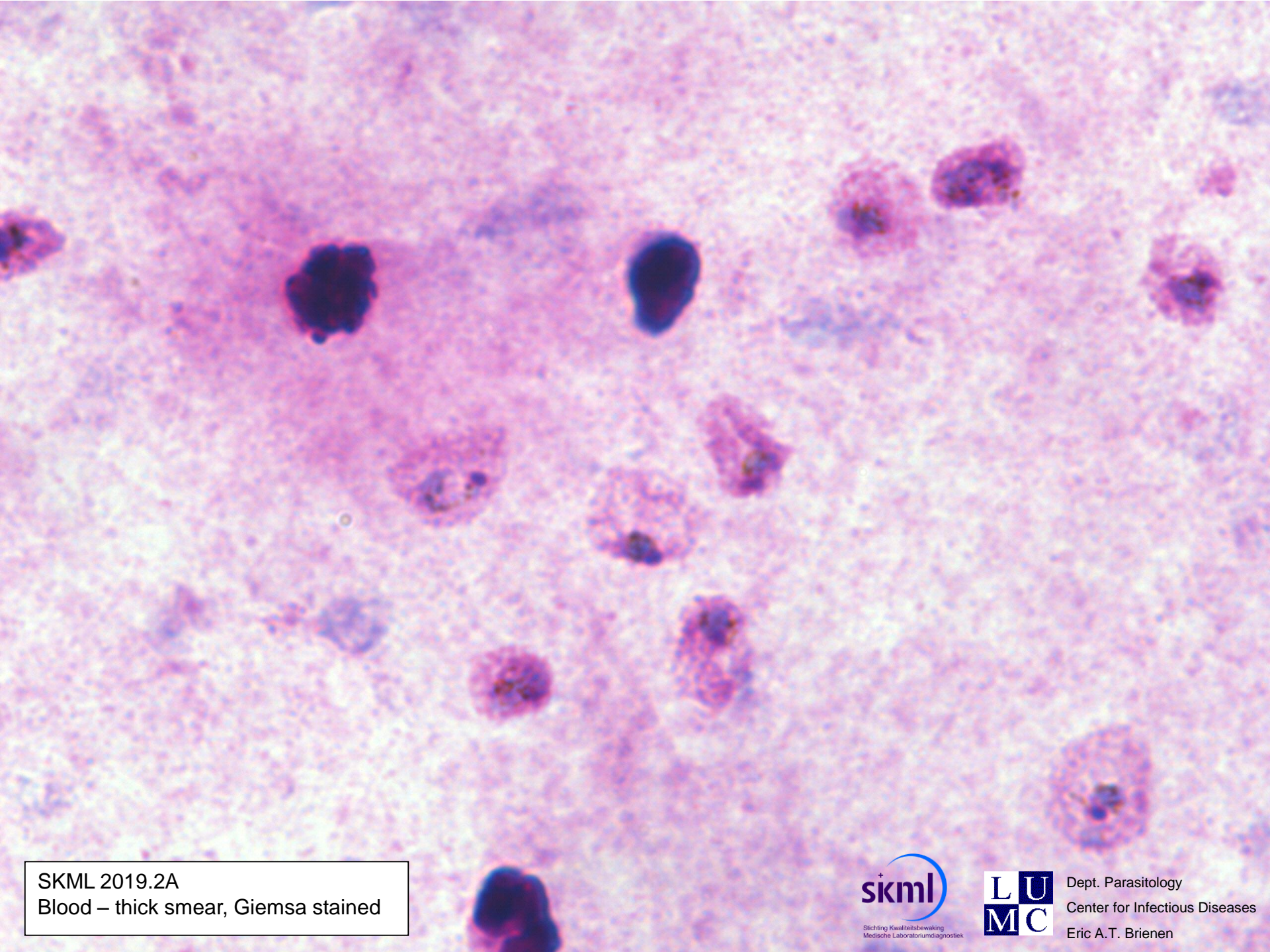
SKML 2019.1B
Blood – thin smear, Giemsa stained



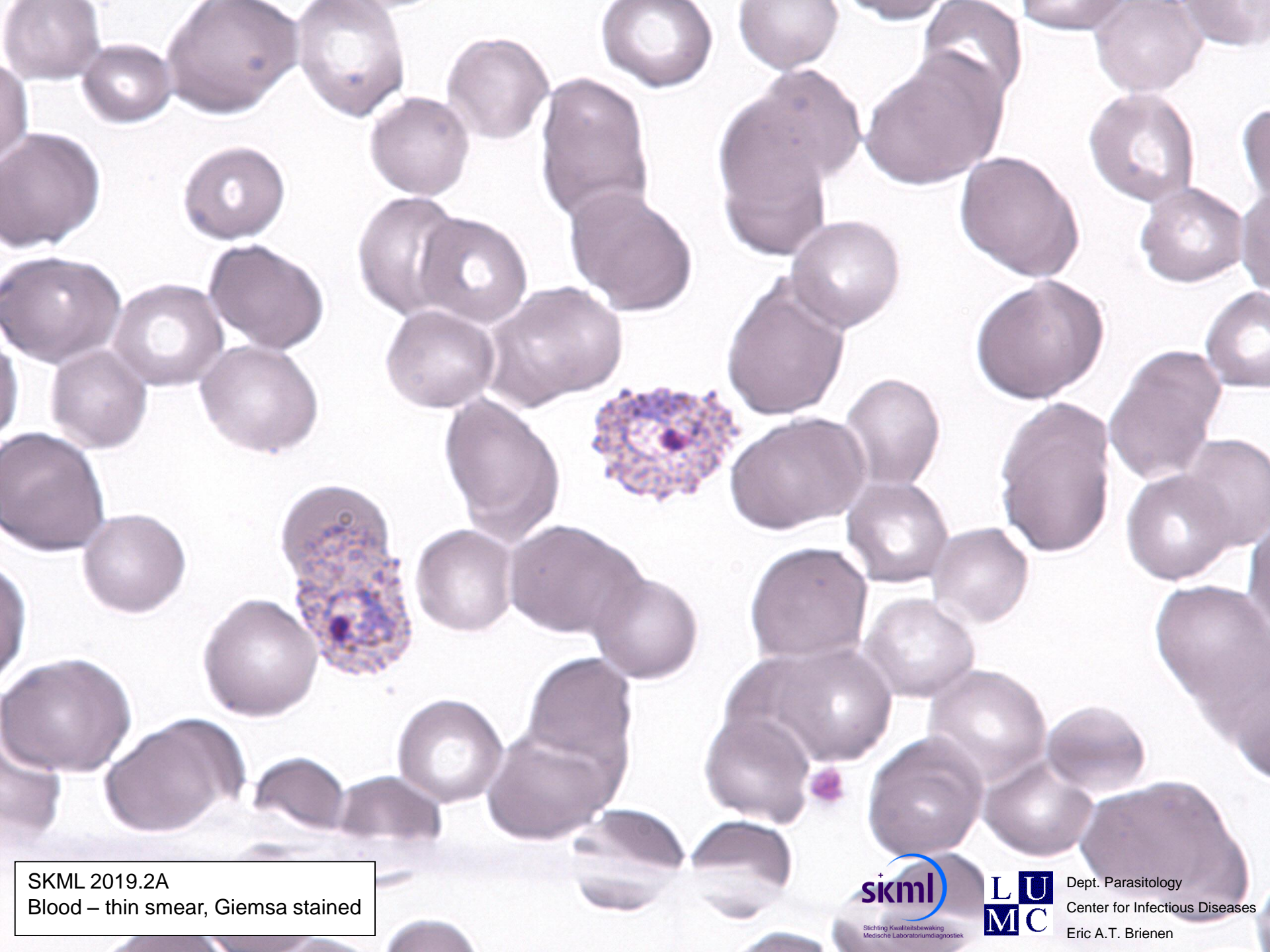
SKML 2019.1C
Faeces – unstained



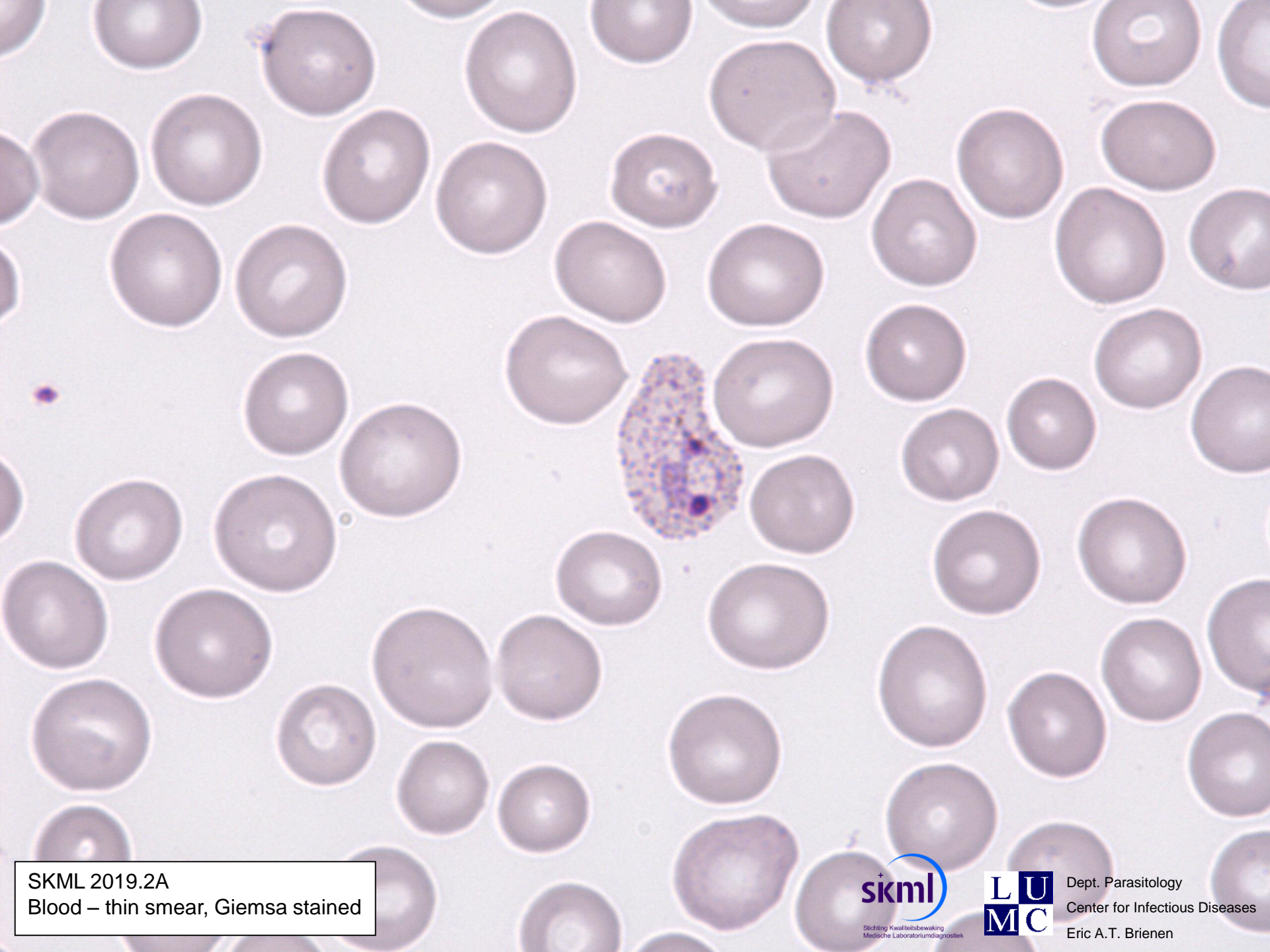
SKML 2019.1D
Faeces – unstained



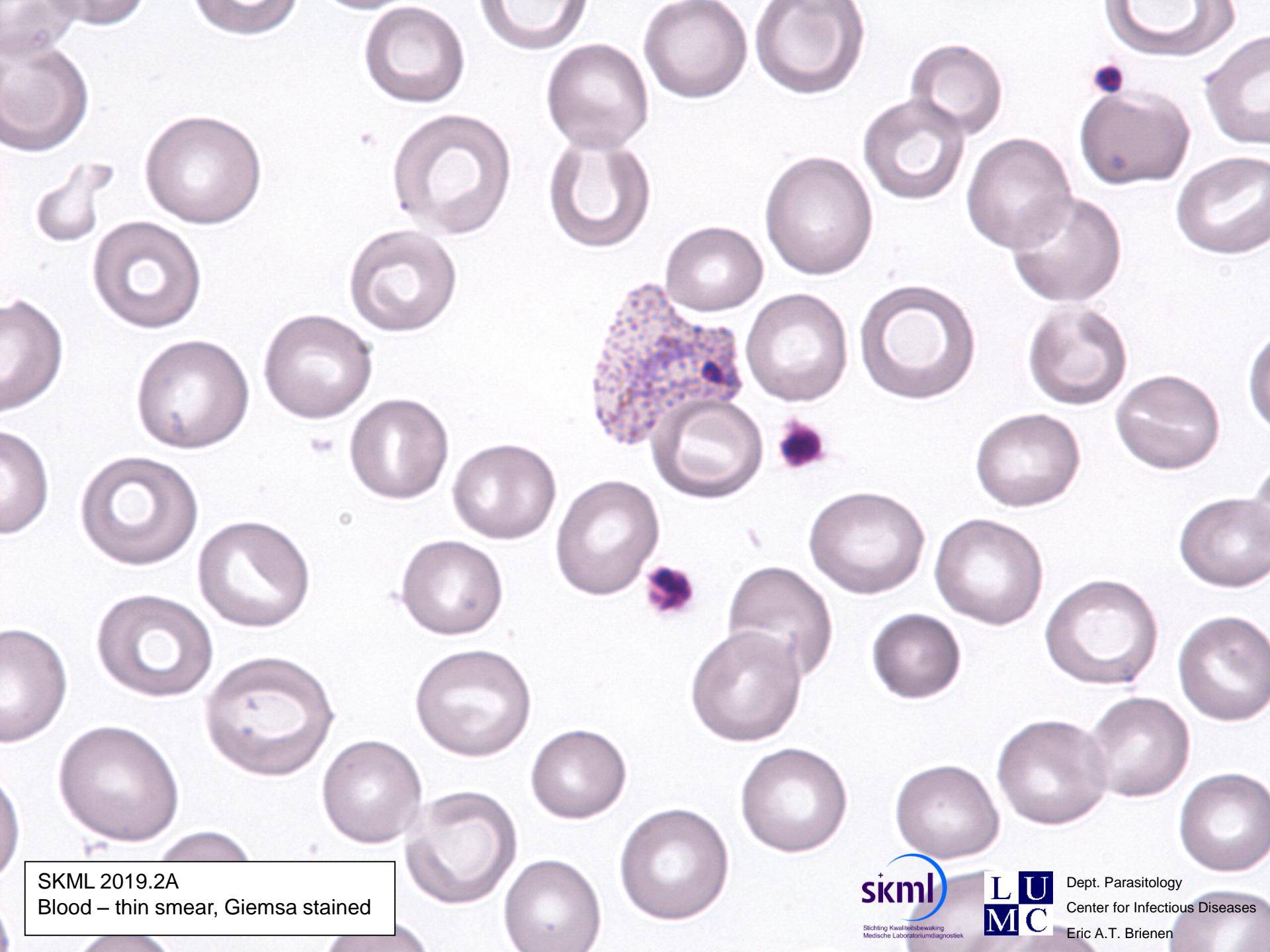
SKML 2019.2A
Blood – thick smear, Giemsa stained



SKML 2019.2A
Blood – thin smear, Giemsa stained



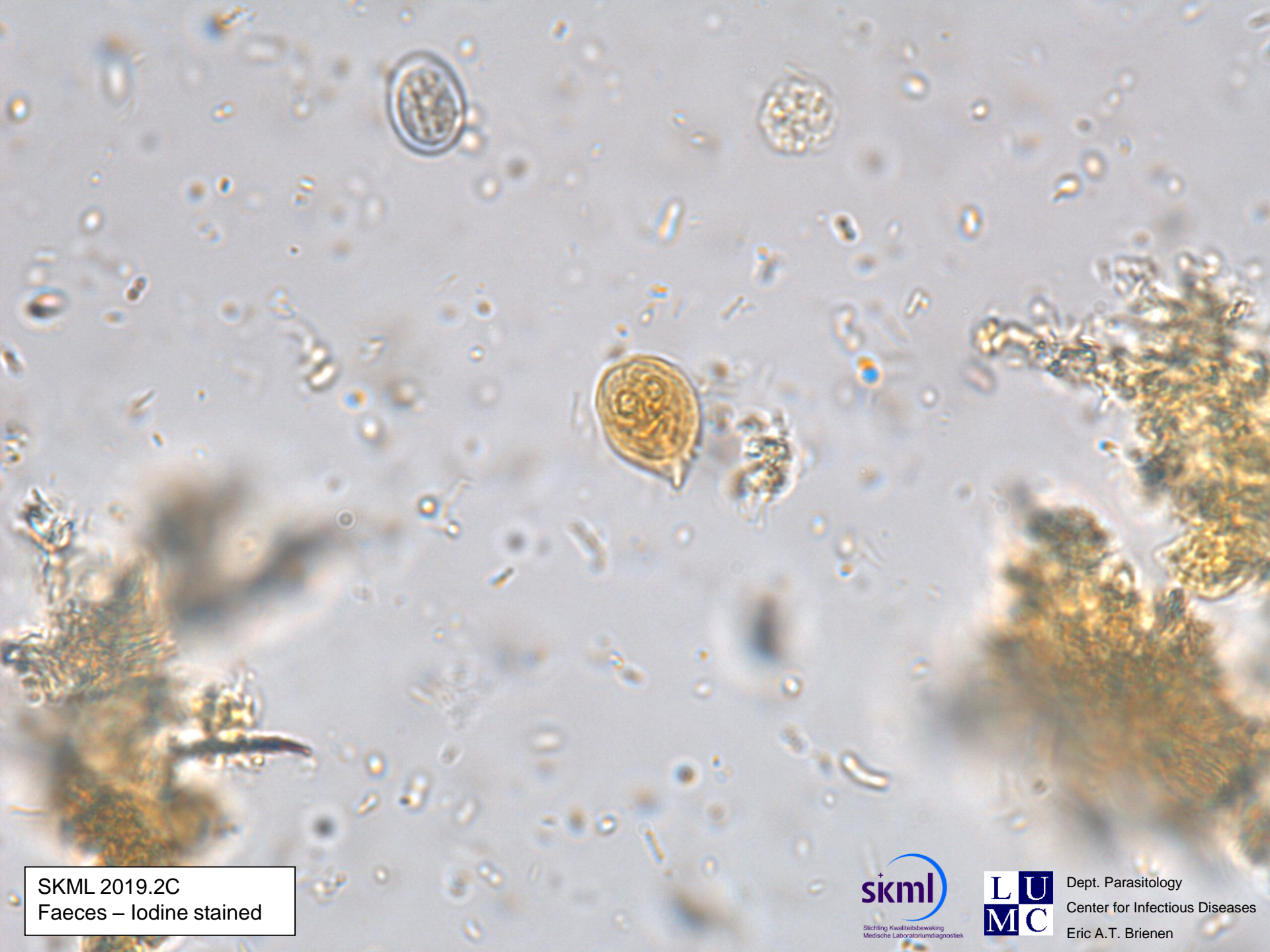
SKML 2019.2A
Blood – thin smear, Giemsa stained



SKML 2019.2A
Blood – thin smear, Giemsa stained



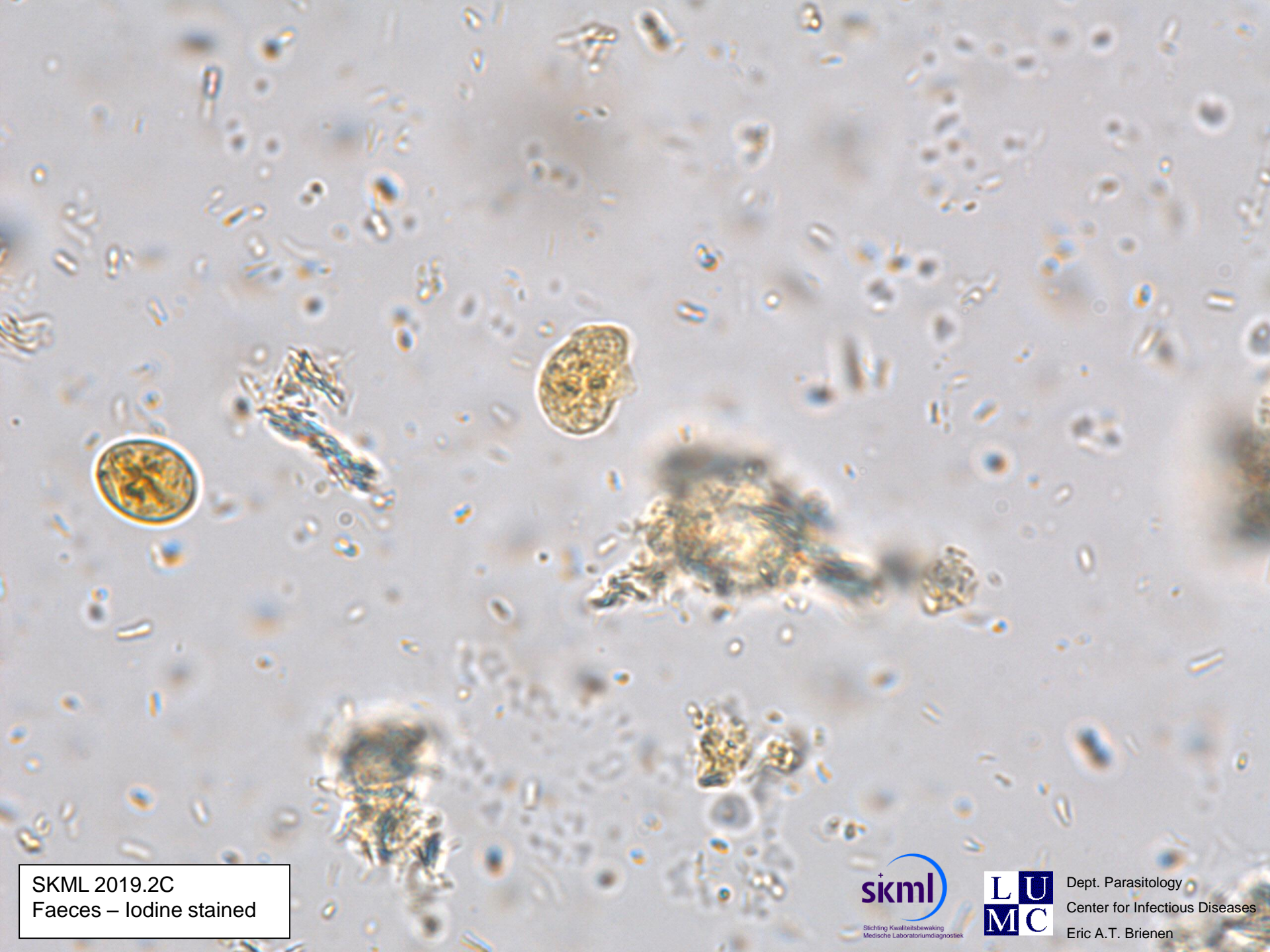
SKML 2019.2B
Blood – thin smear, Giemsa stained



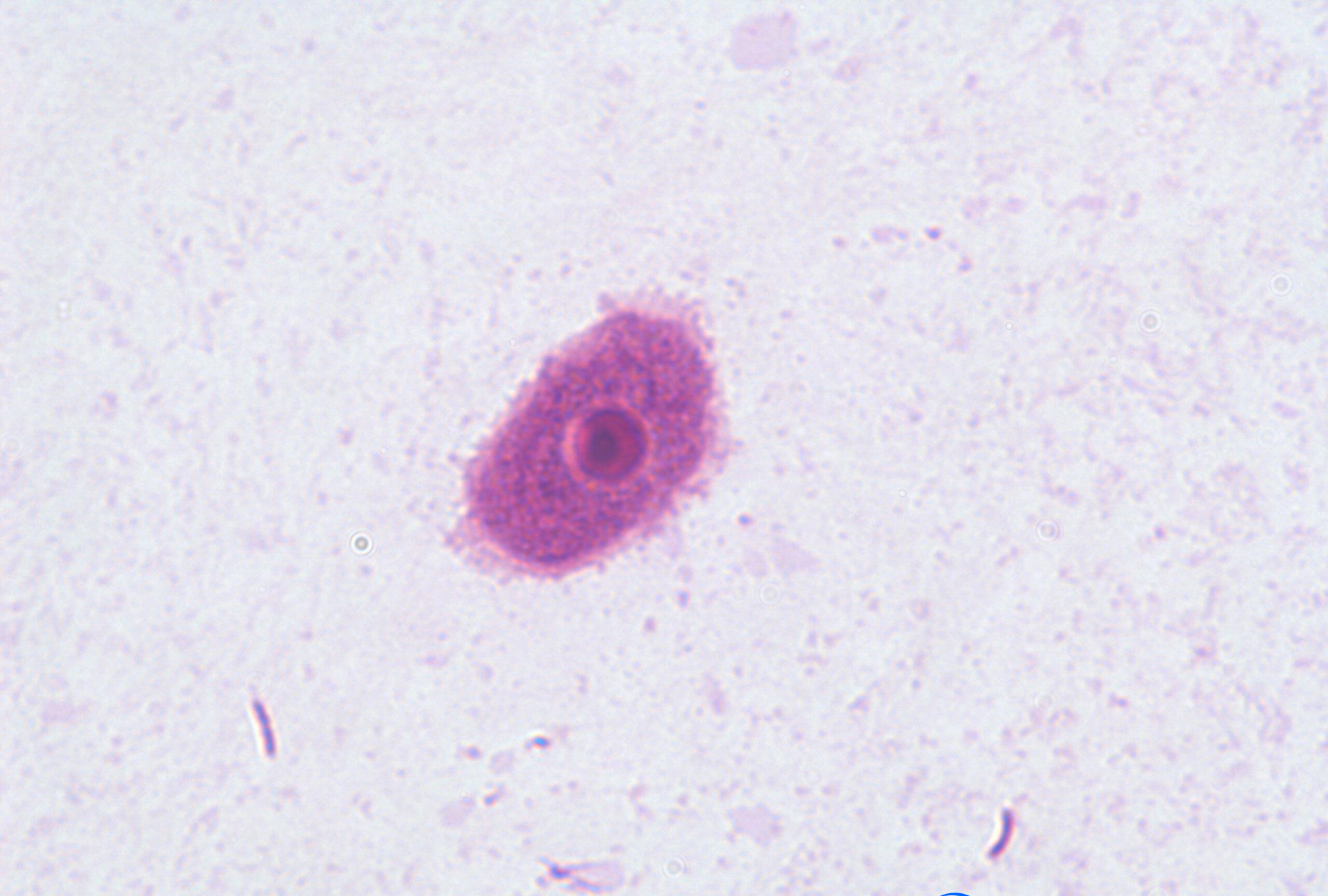
SKML 2019.2C
Faeces – Iodine stained



SKML 2019.2C
Faeces – Iodine stained



SKML 2019.2C
Faeces – Iodine stained



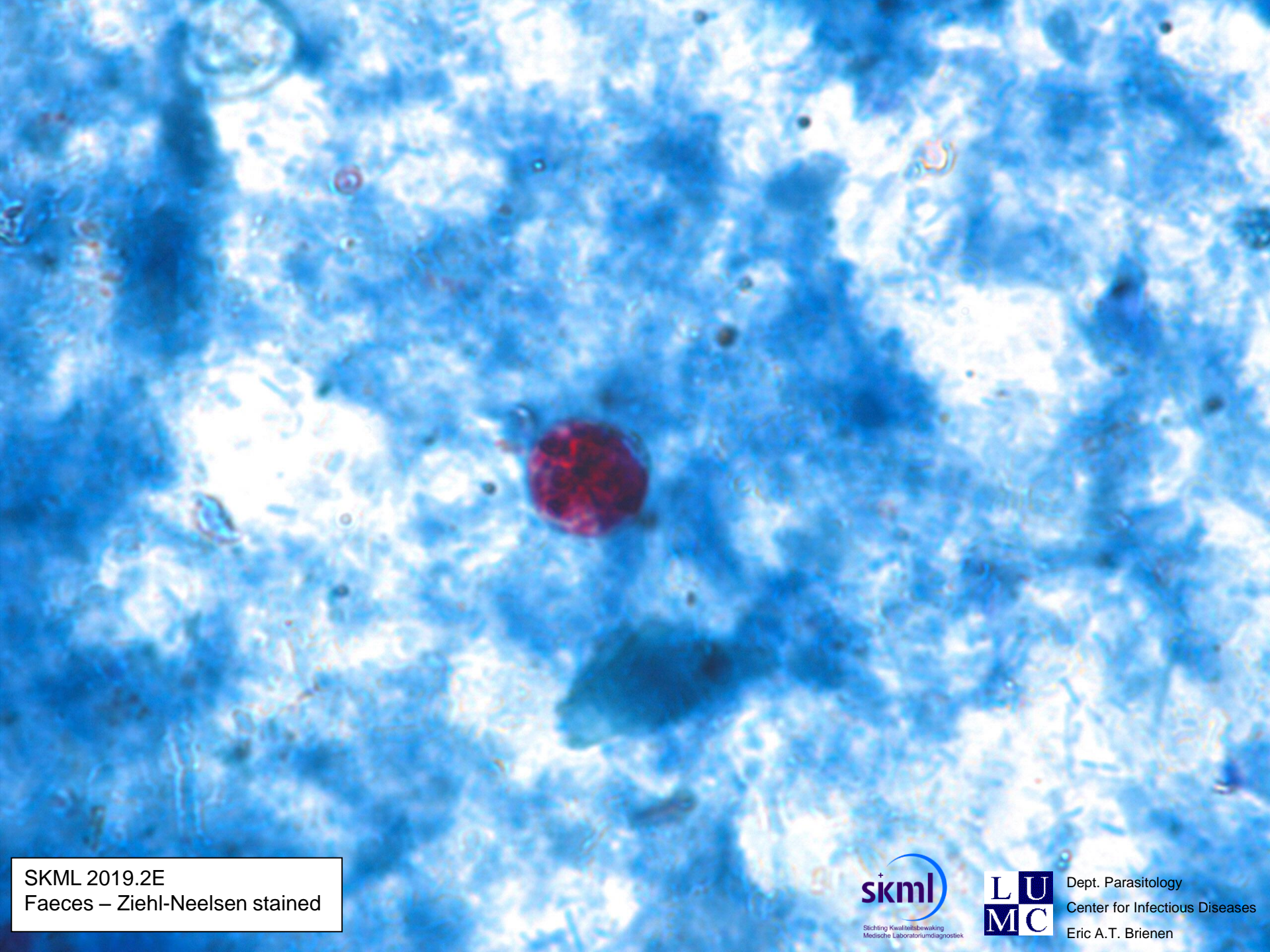
SKML 2019.2D
Cornea – Giemsa stained



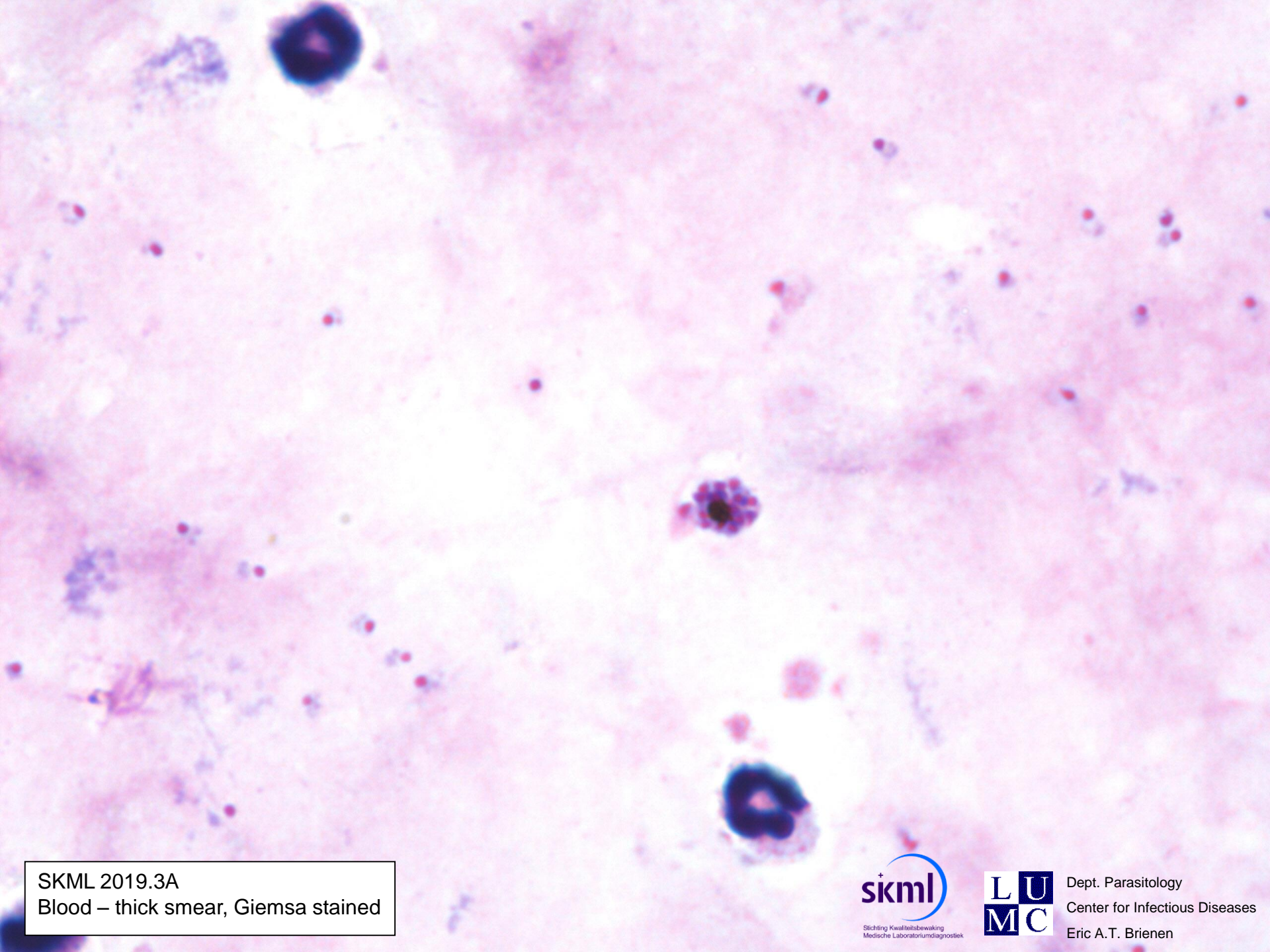
SKML 2019.2D
Cornea – Giemsa stained



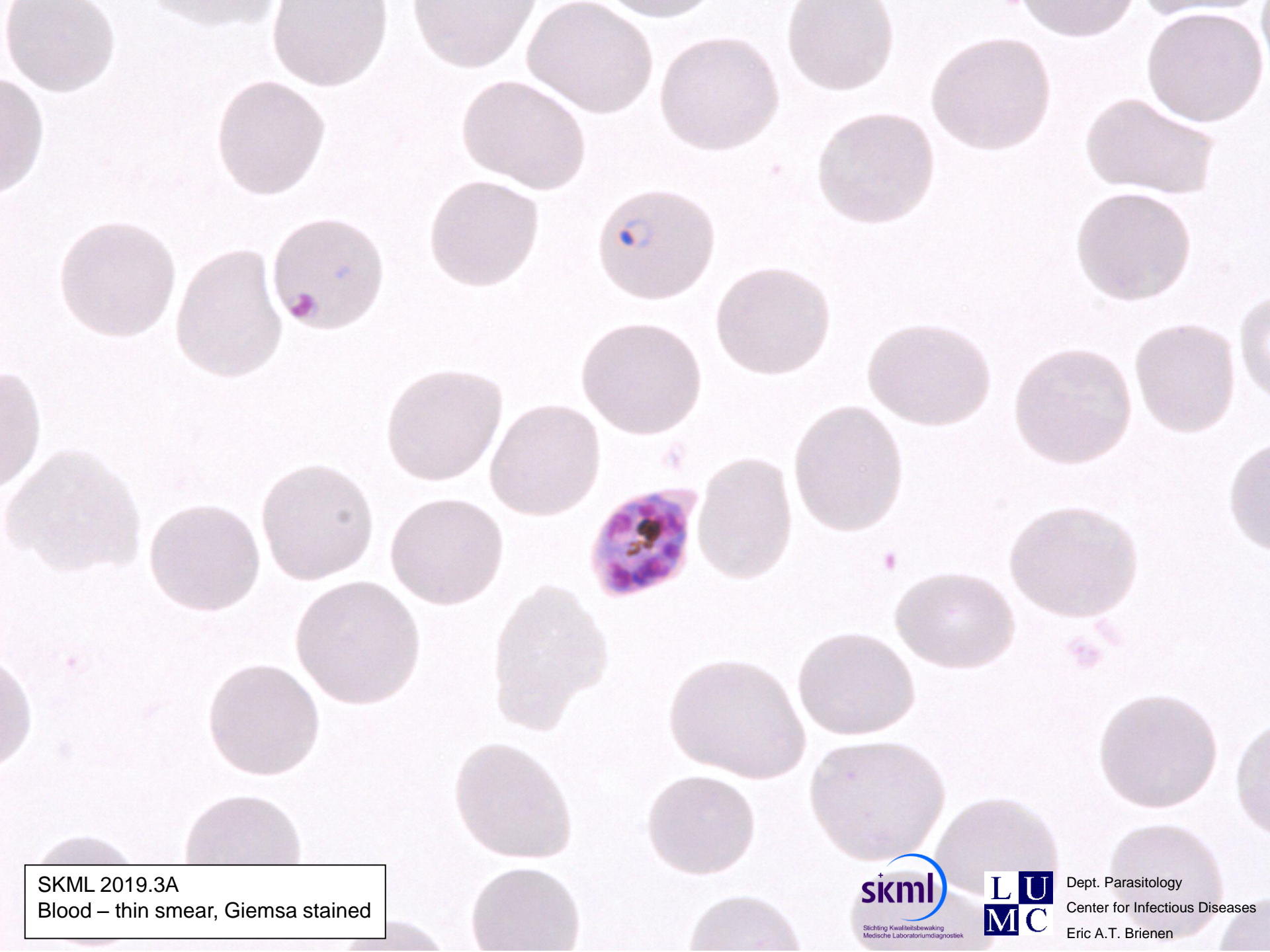
SKML 2019.2E
Faeces – Iodine stained



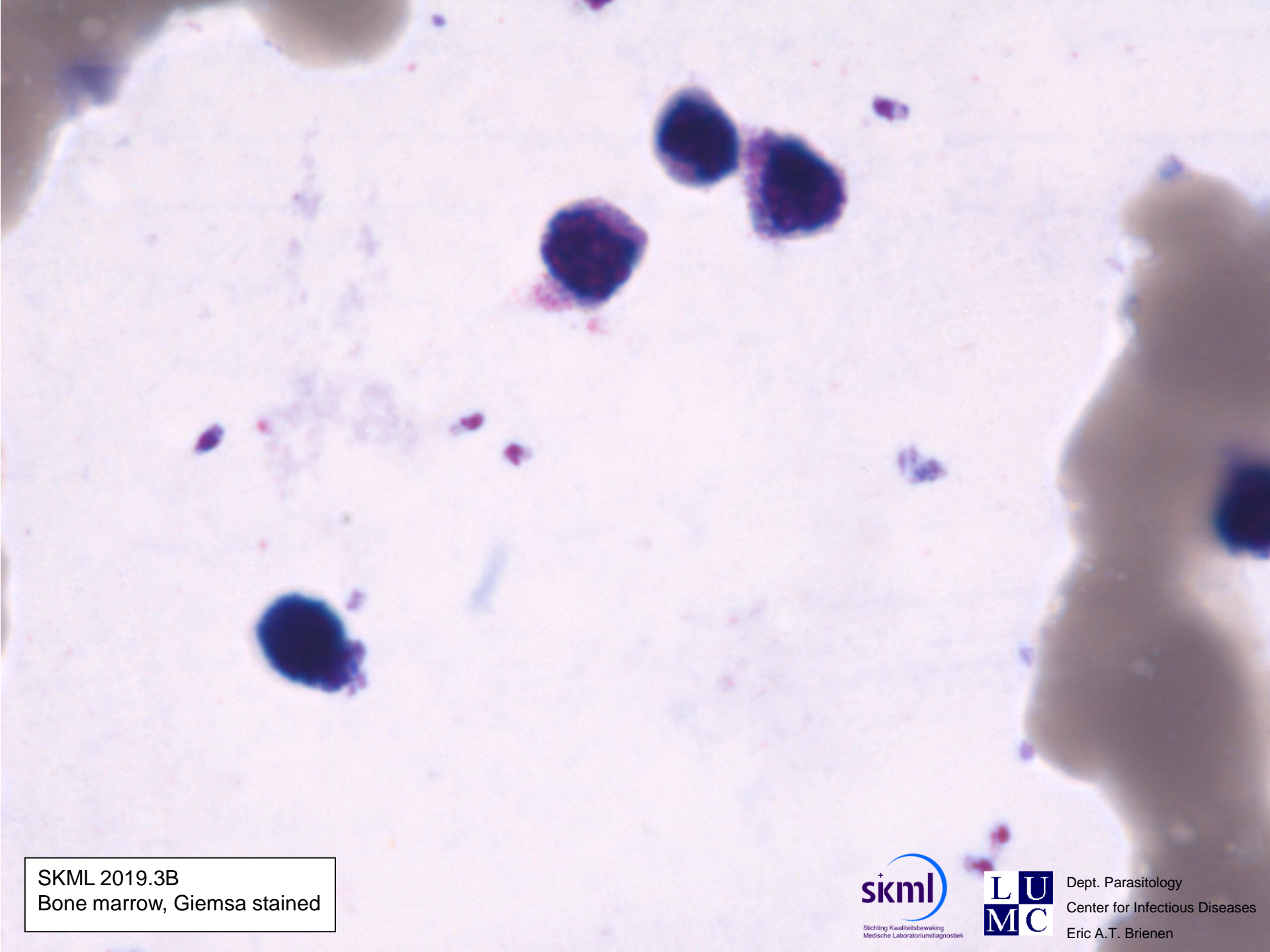
SKML 2019.2E
Faeces – Ziehl-Neelsen stained



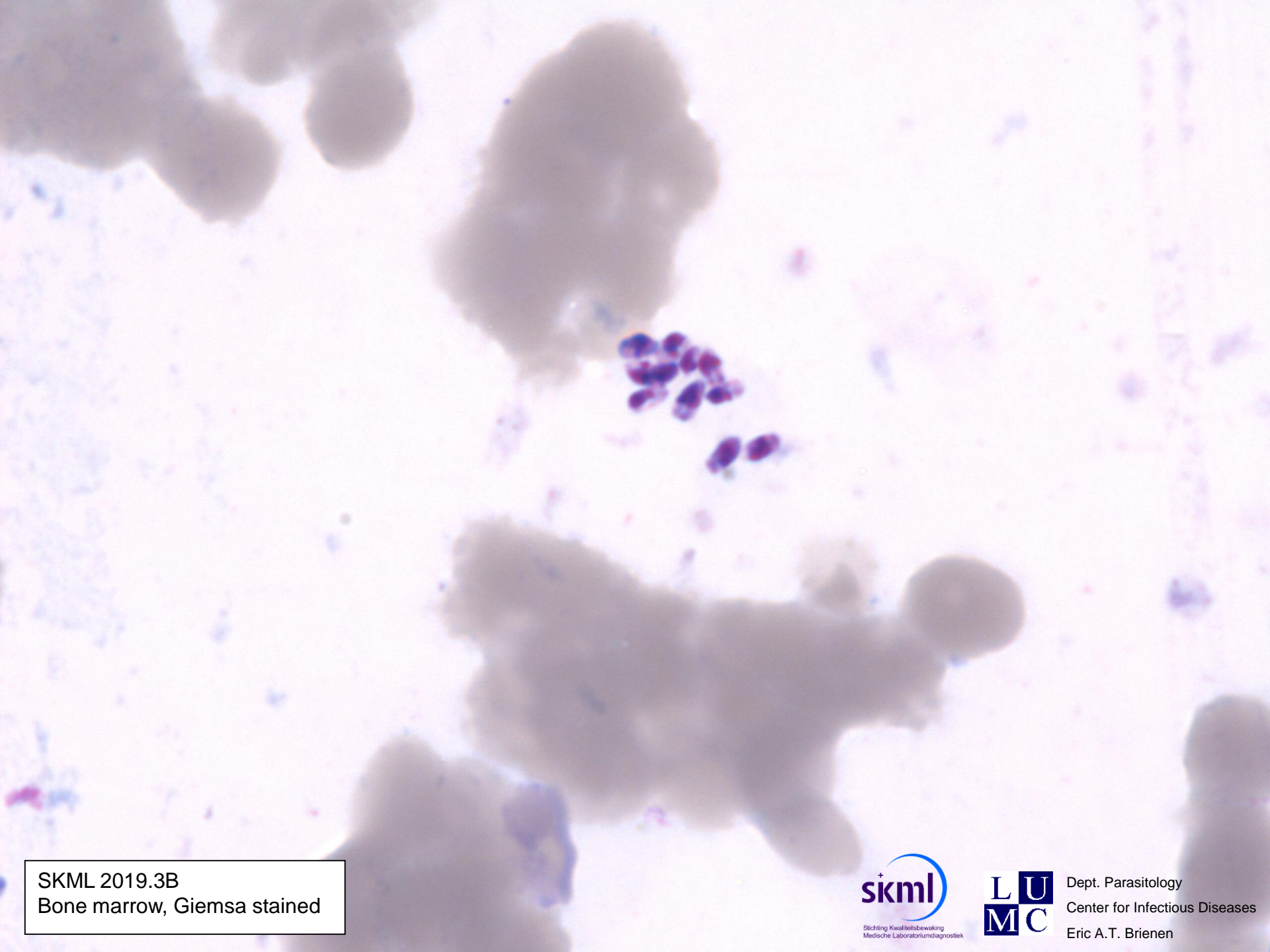
SKML 2019.3A
Blood – thick smear, Giemsa stained



SKML 2019.3A
Blood – thin smear, Giemsa stained



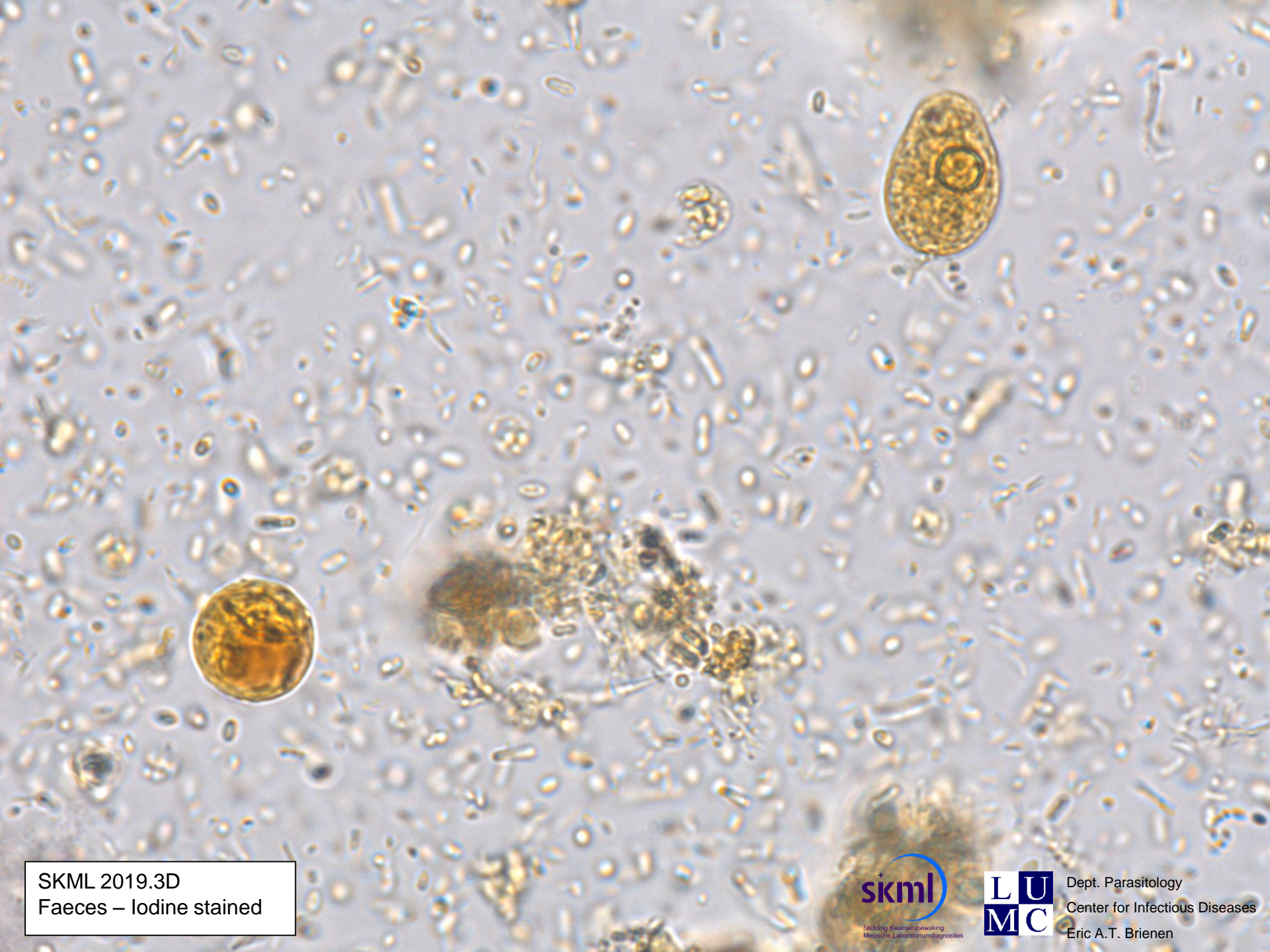
SKML 2019.3B
Bone marrow, Giemsa stained



SKML 2019.3B
Bone marrow, Giemsa stained



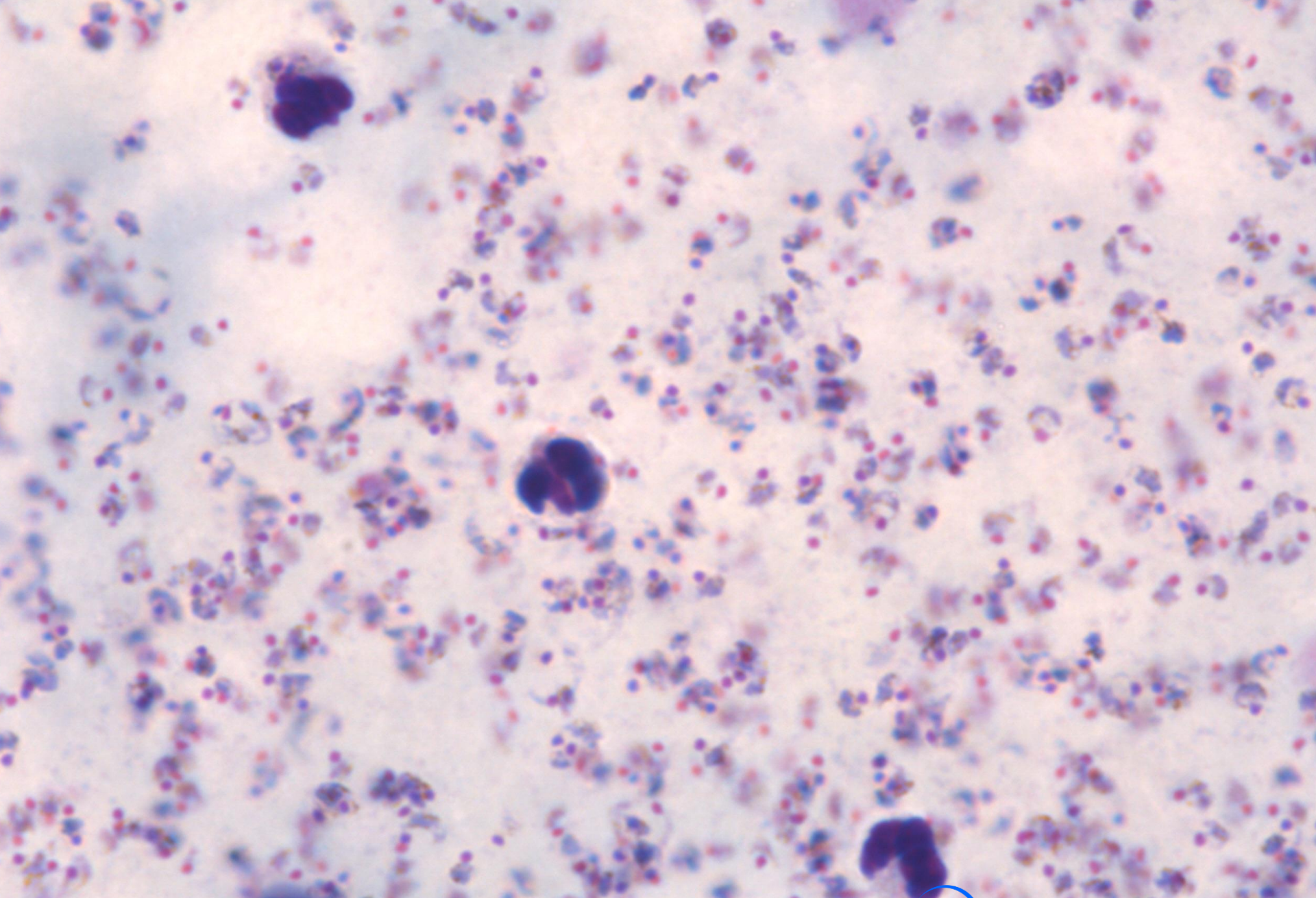
SKML 2019.3C
Faeces – unstained



SKML 2019.3D
Faeces – Iodine stained



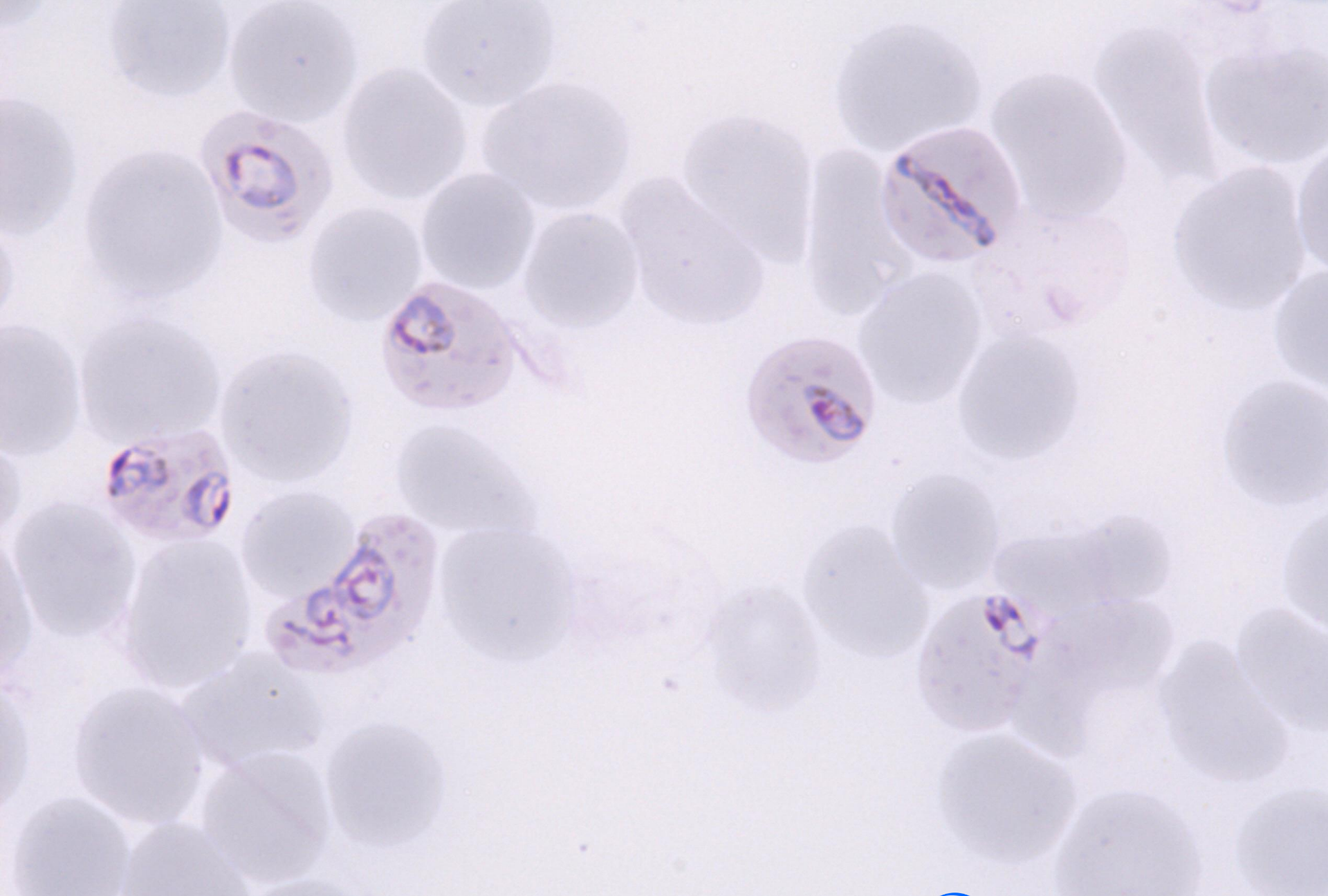
SKML 2019.3D
Faeces – Iodine stained



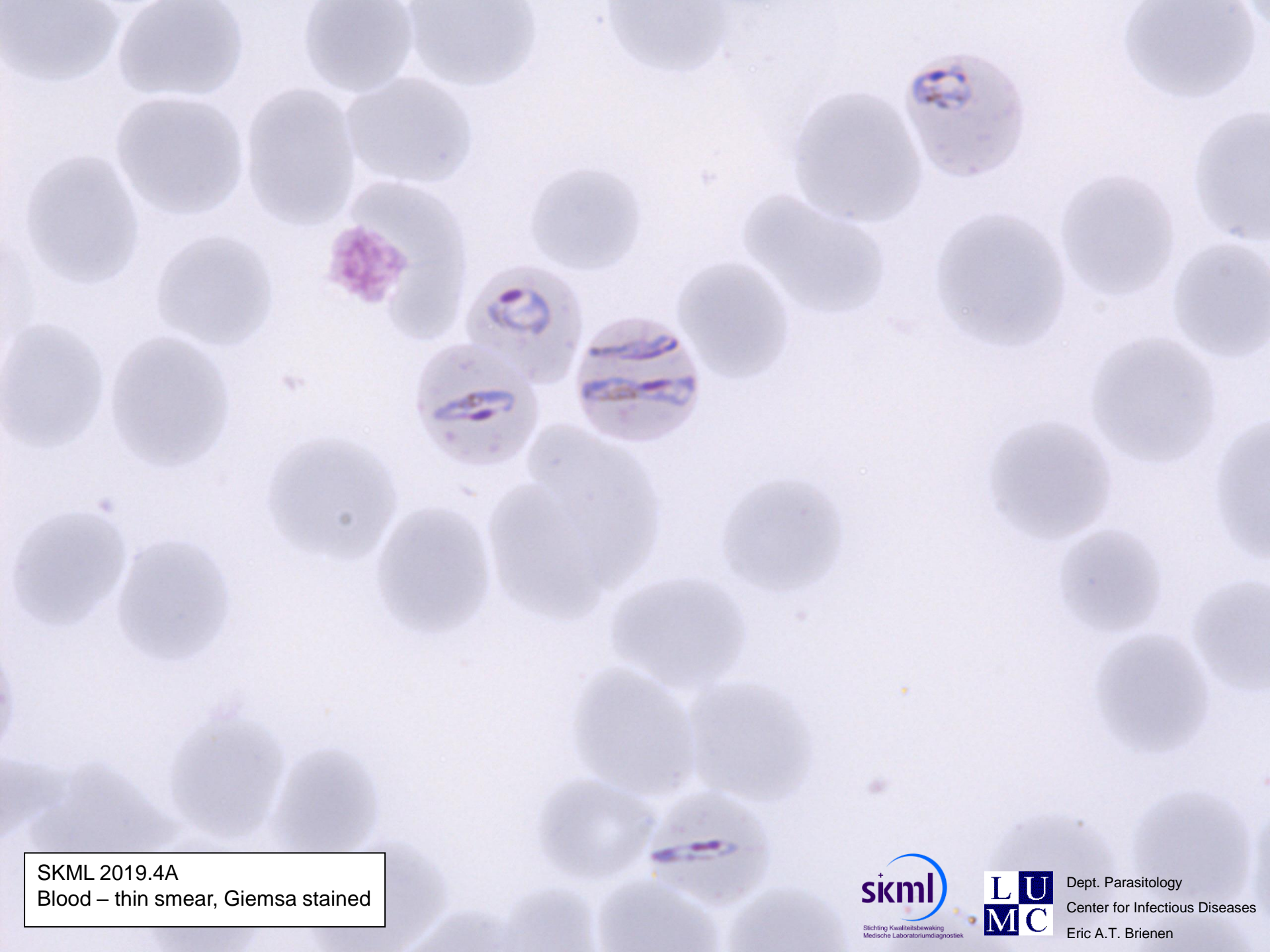
SKML 2019.4A
Blood – thick smear, Giemsa stained



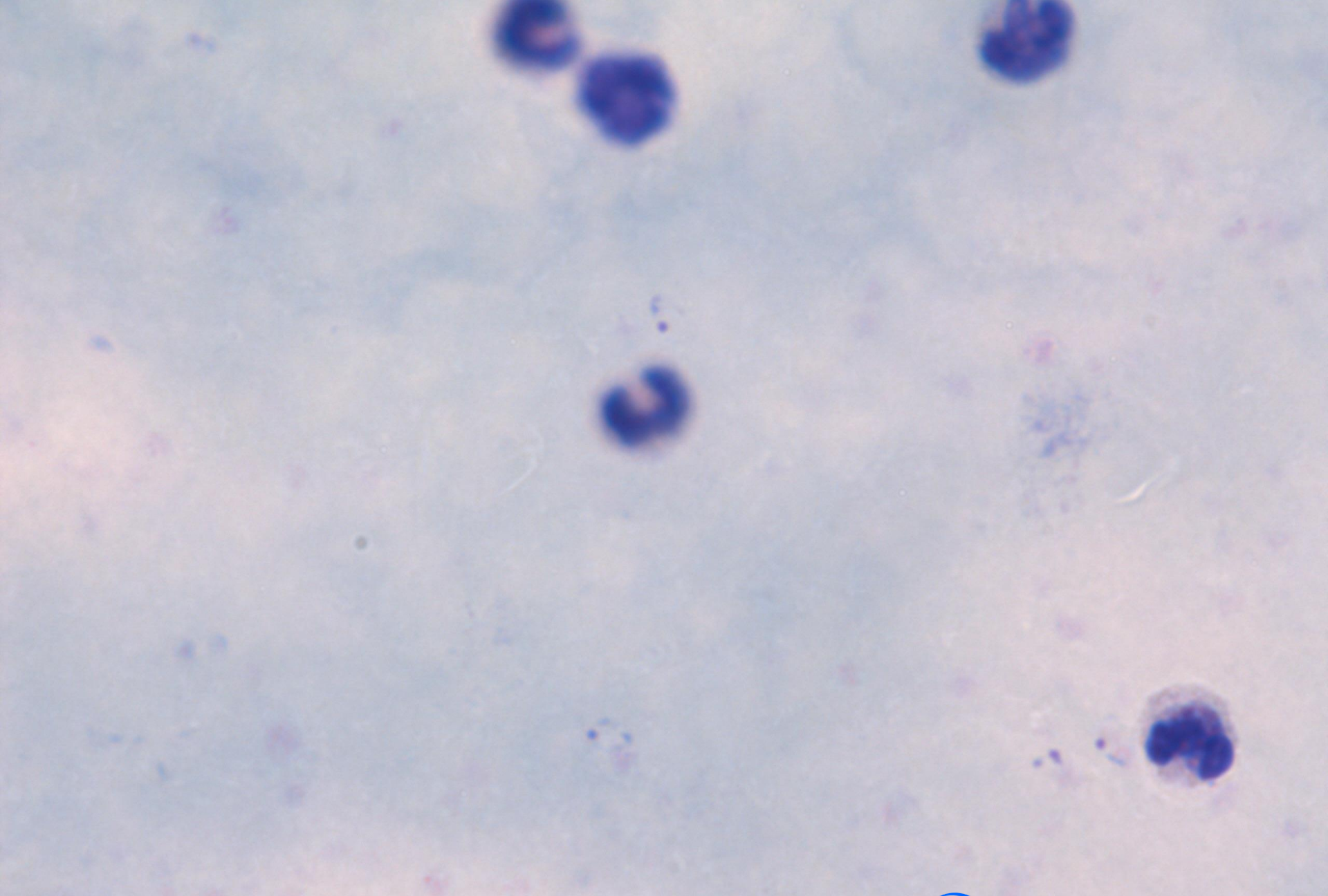
SKML 2019.4A
Blood – thin smear, Giemsa stained



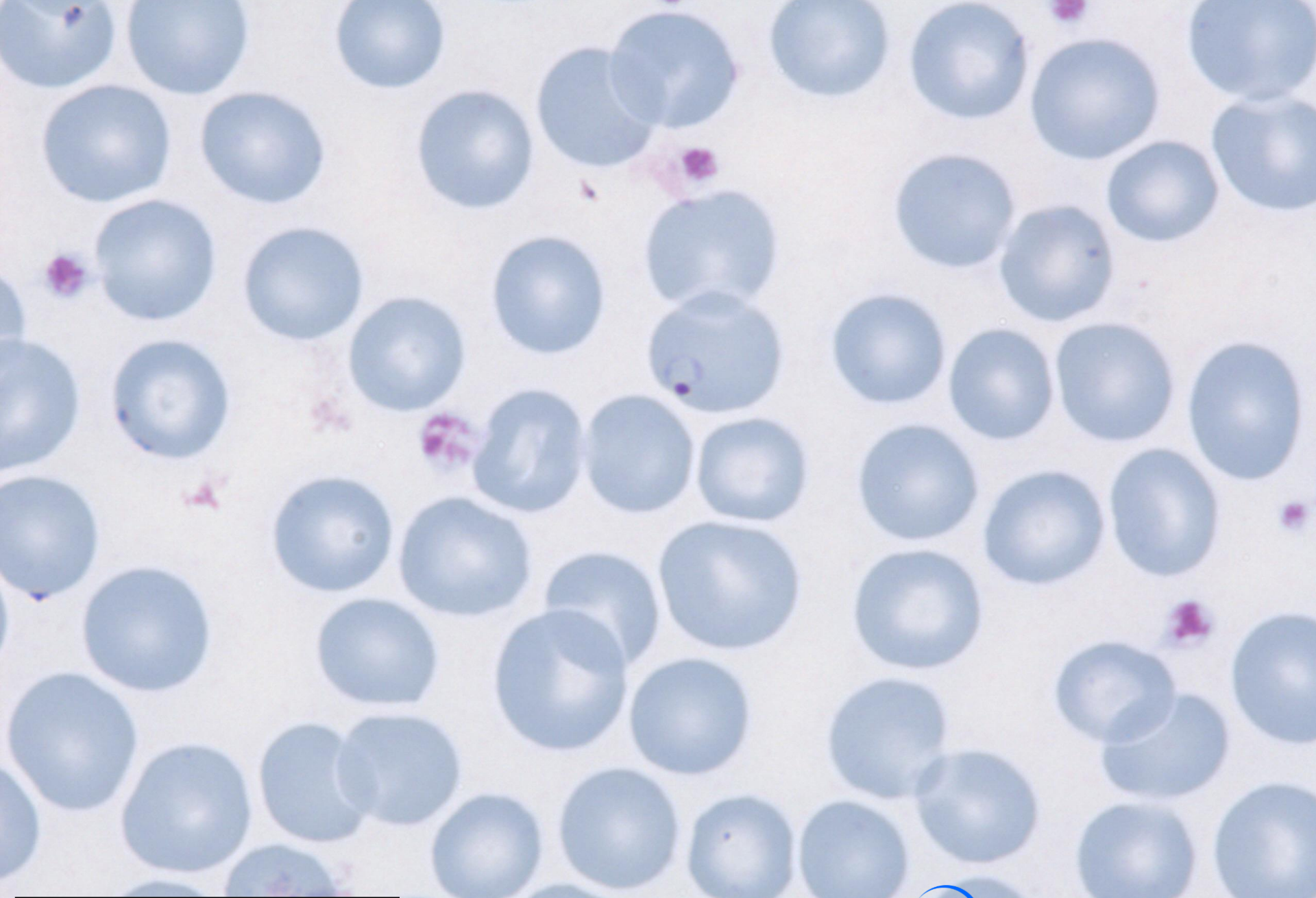
SKML 2019.4A
Blood – thin smear, Giemsa stained



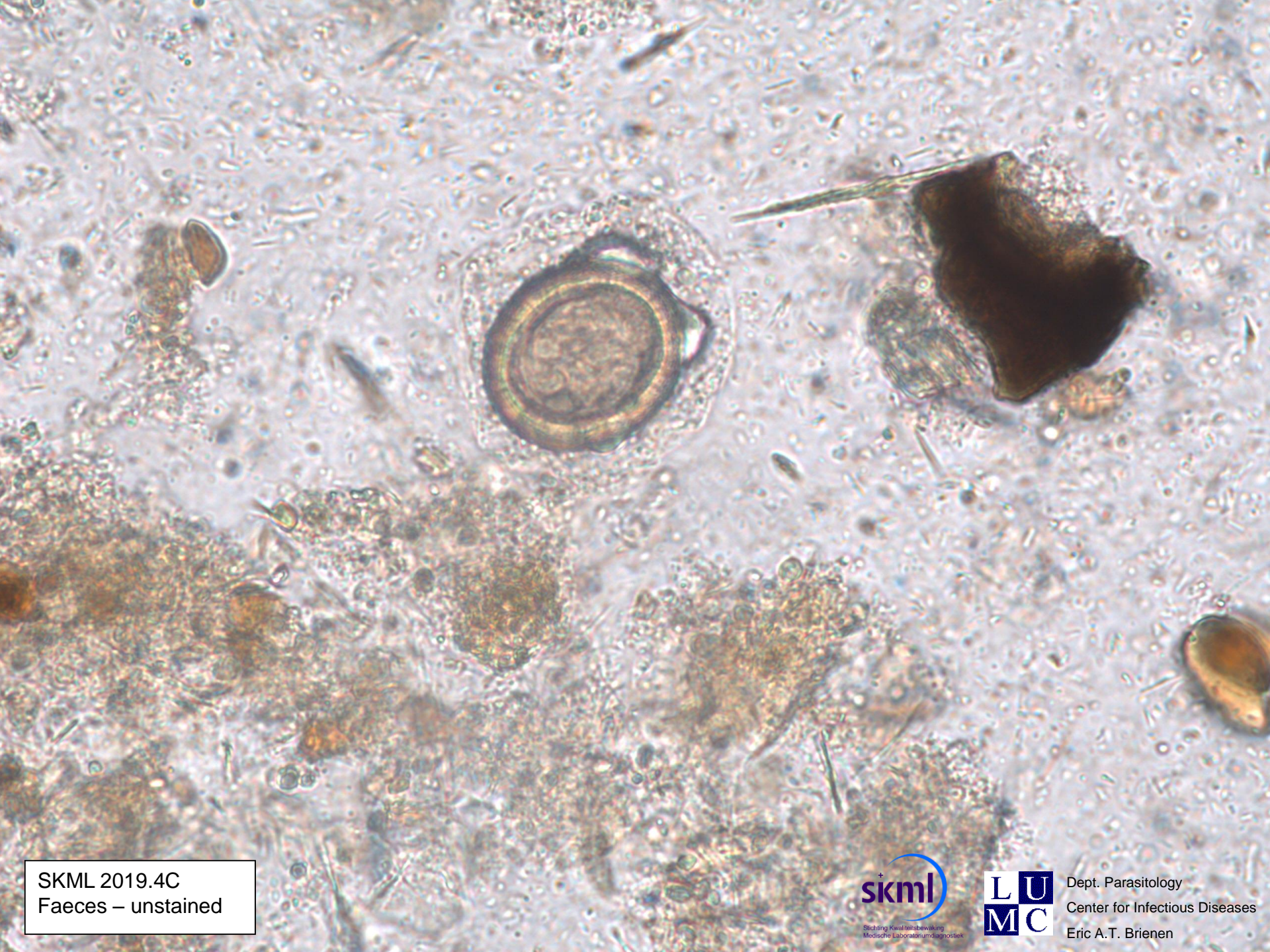
SKML 2019.4A
Blood – thin smear, Giemsa stained



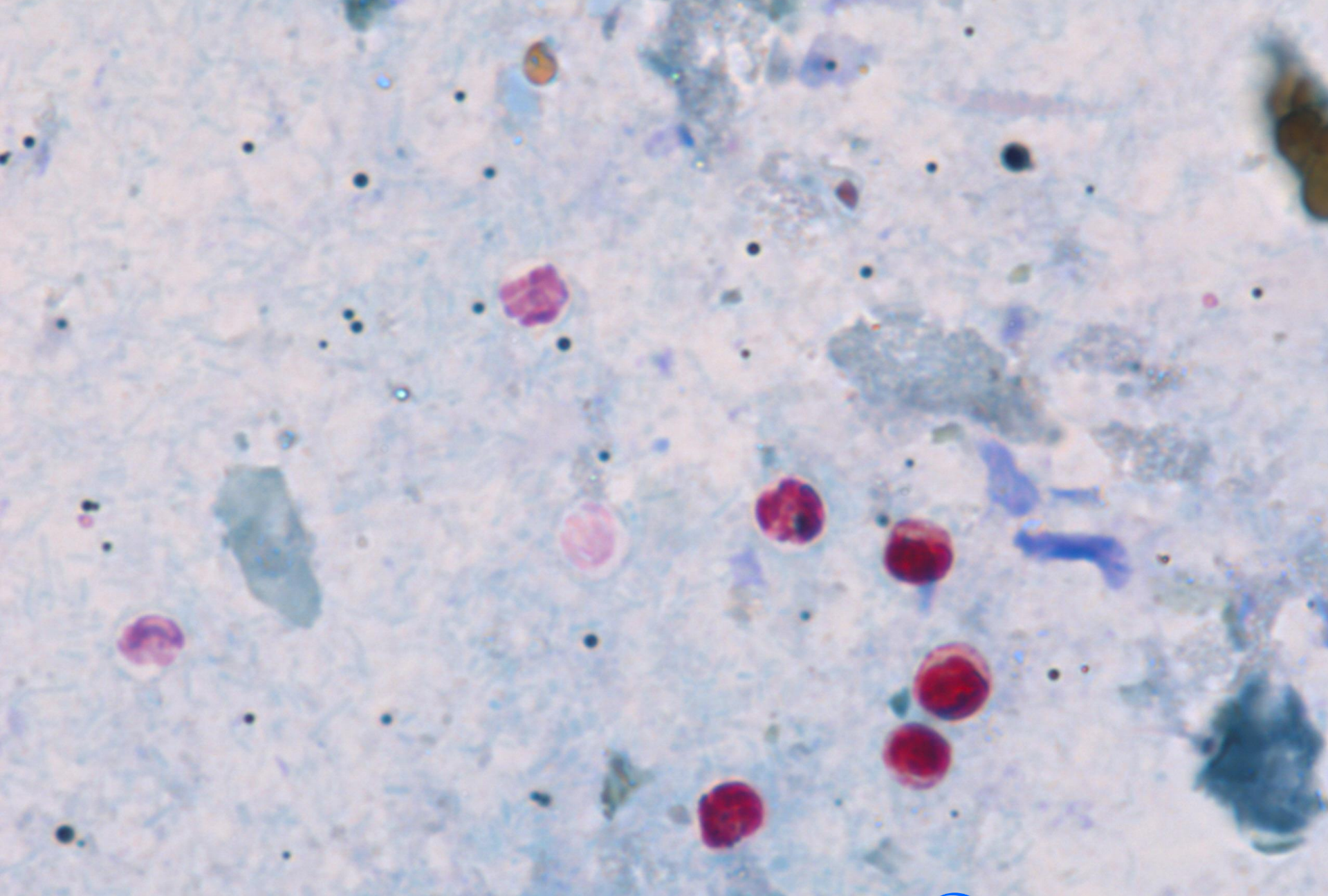
SKML 2019.4B
Blood – thick smear, Giemsa stained



SKML 2019.4B
Blood – thin smear, Giemsa stained



SKML 2019.4C
Faeces – unstained



SKML 2019.4D
Faeces – Ziehl-Neelsen stained

SKML morphology parasitology – explanations

2019.1A *Trypanosoma brucei* spp.; trypomastigotes

2019.1B *Plasmodium falciparum*; 2.5%, trophozoites, schizonts, pigment in leucocytes

2019.1C Hookworm; eggs

2019.1D *Hymenolepis* spp.; eggs (*Hymenolepis diminuta*)

2019.2A *Plasmodium vivax*/*P. ovale* (*P. vivax*)

2019.2B *Plasmodium falciparum*; gametocytes

2019.2C *Giardia lamblia* + *Dientamoeba fragilis* (sporadic *Blastocystis* spp)

2019.2D *Acanthamoeba* spp.; trophozoites, cysts

2019.2E *Cyclospora cayetanensis*; oocysts

2019.3A *Plasmodium falciparum*; 1.8%, trophozoites, schizonts, pigment

2019.3B *Leishmania* spp.; amastigotes

2019.3C *Schistosoma mansoni*; eggs

2019.3D *Entamoeba histolytica* / *Entamoeba dispar*; trophozoites, cysts

2019.4A *Plasmodium falciparum*; ca.13%, trophozoites

2019.4B *Plasmodium falciparum*; 0.1%, trophozoites

2019.4C *Taenia* spp.; eggs

2019.4D *Cryptosporidium* spp.; oocysts